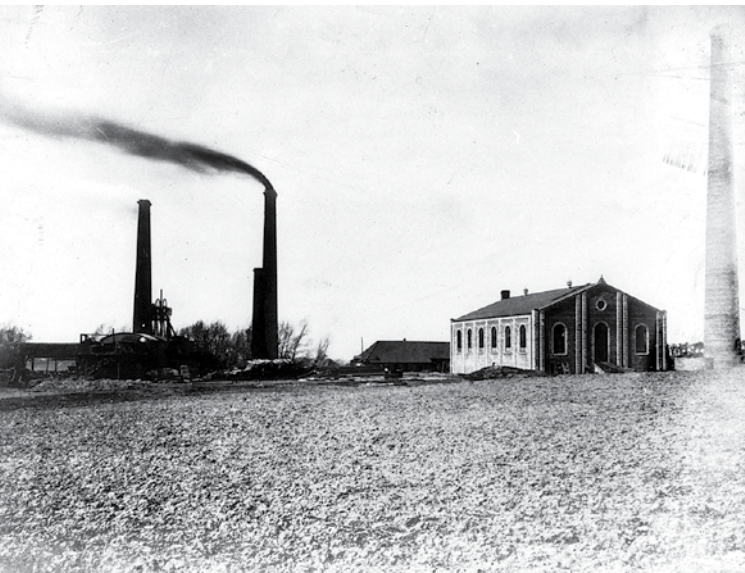


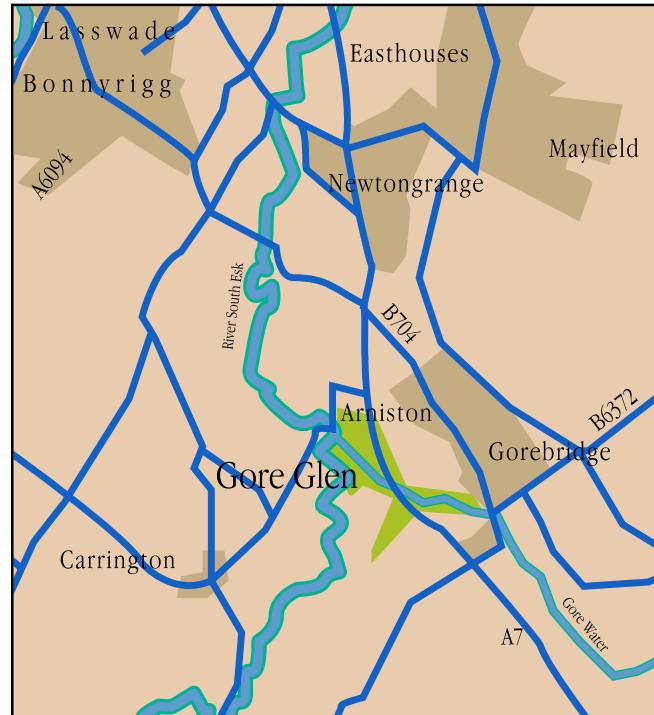


The first gunpowder mill in Scotland was located in the Glen on the Gore Water in 1794. For 67 years water was channelled to drive 10 water wheels.

Stobbs Mill gunpowder, produced by Hitchener, Hunter and Merricks supplied the British Army during the Napoleonic wars and was used to blast coal in the Emily and Gore Pits.



The former railway line known as the 'Waverley', named after the novel by Walter Scott was used to transport Midlothian coals to Edinburgh and Carlisle. During the 1900's a single fare from Gorebridge to Edinburgh was 8 1/2p, with a journey time of 40mins. The present plans to re-instate this link will follow the original route.



Gore Glen is patrolled and managed by Midlothian Ranger Service. Please act responsibly and do not damage or remove any plants or animals. Please do not drop any litter, and clean up after your dog. Thank you.

Midlothian Ranger Service
Vogie Country Park,
Gorebridge,
Midlothian EH23 4NU.
Tel. 01875 821990

PLEASE REMEMBER

- No Firearms
- No Fires
- No Swimming
- No Fishing



Gore Glen



Woodland Park



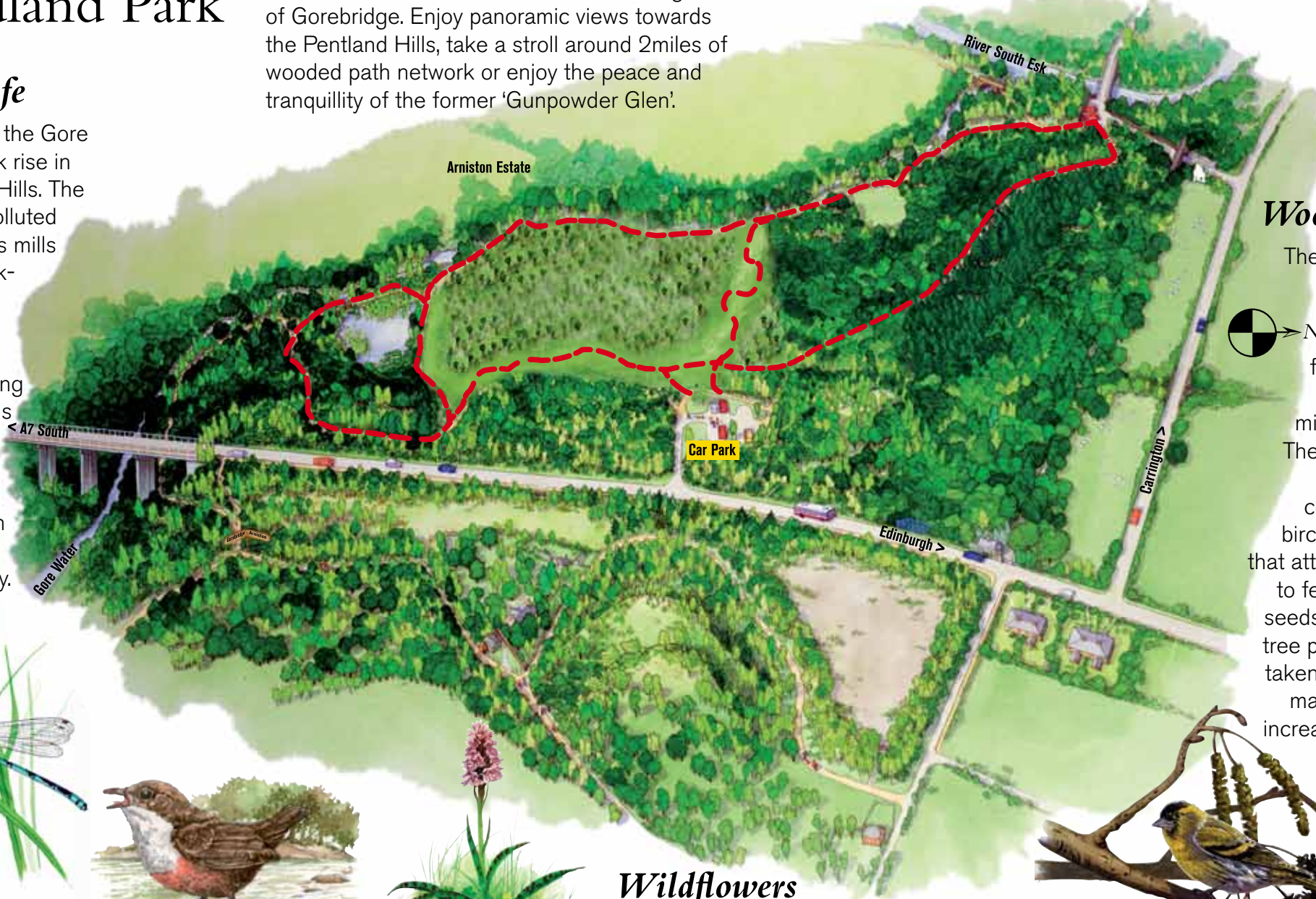
Gore Glen Woodland Park

Welcome to Gore Glen set in the heart of Midlothian's countryside on the banks of the Gore Water and River South Esk below the Village of Gorebridge. Enjoy panoramic views towards the Pentland Hills, take a stroll around 2 miles of wooded path network or enjoy the peace and tranquillity of the former 'Gunpowder Glen'.



Water Life

The waters of the Gore and South Esk rise in the Moorfoot Hills. The rivers, once polluted by Midlothian's mills and mine workings are now home to a variety of wildlife including dippers, herons and brown trout. Damselflies are often seen at the pond on a bright day.



Woodlands

The landscape at the Glen has been sculpted from former mine and mill workings. The shale bing has been colonised by birch and alder that attract siskins to feed on their seeds. Extensive tree planting has taken place over many years to increase species diversity.

Common Blue Damselfly

Dipper

Common Spotted Orchid

Wildflowers

Over 60 species thrive in the Glen with rarities such as Broad Leaved Helleborine and Birds Nest Orchid. Common Spotted Orchids form drifts of purple in summer

