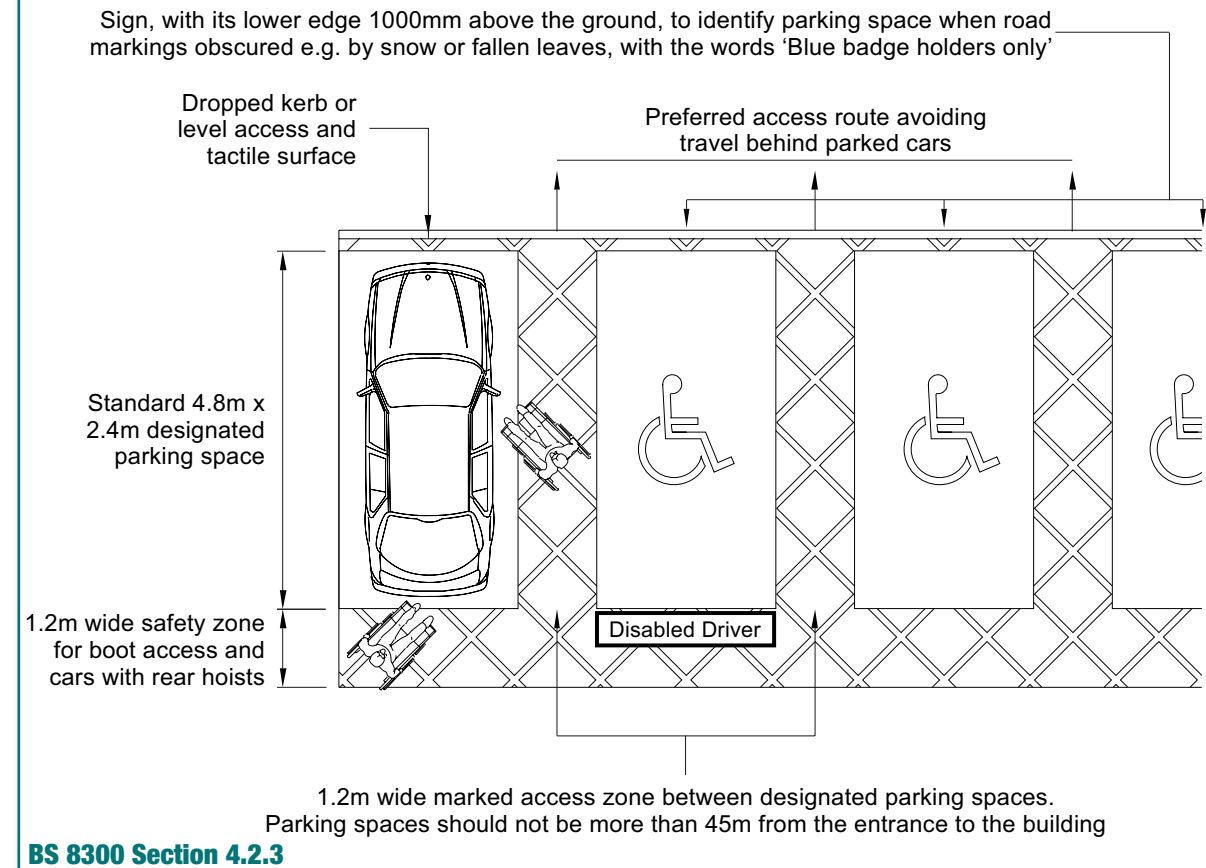


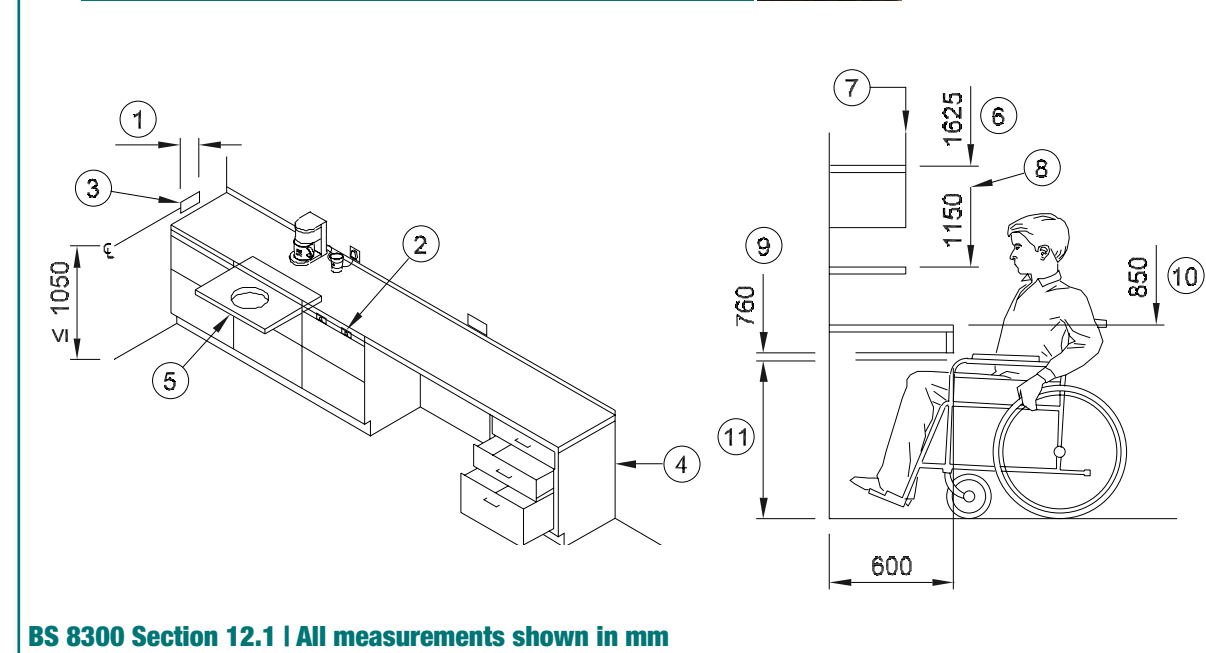
parking

Access around designated off-street parking spaces



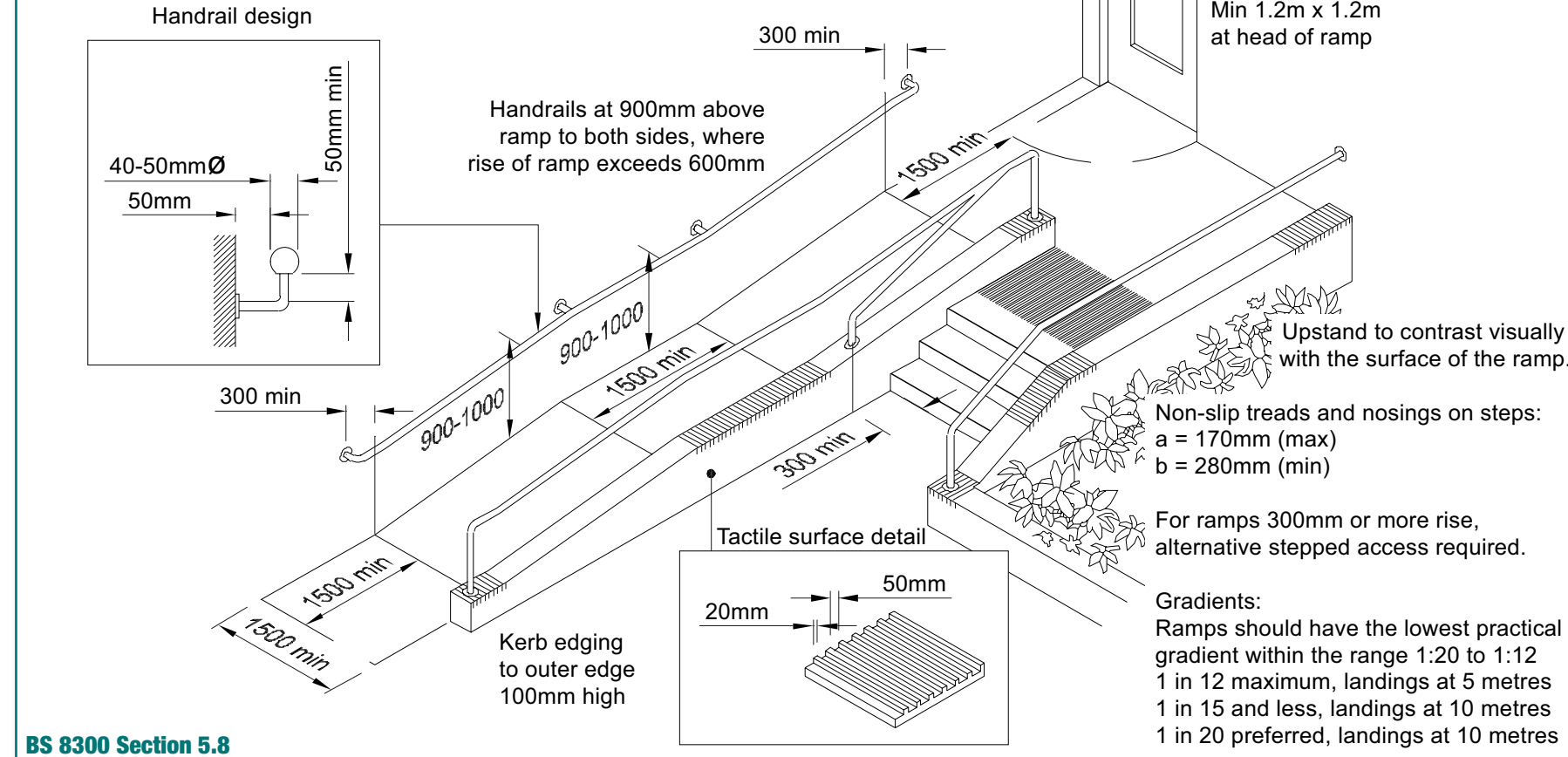
work surfaces

Kitchen and work surface height guide



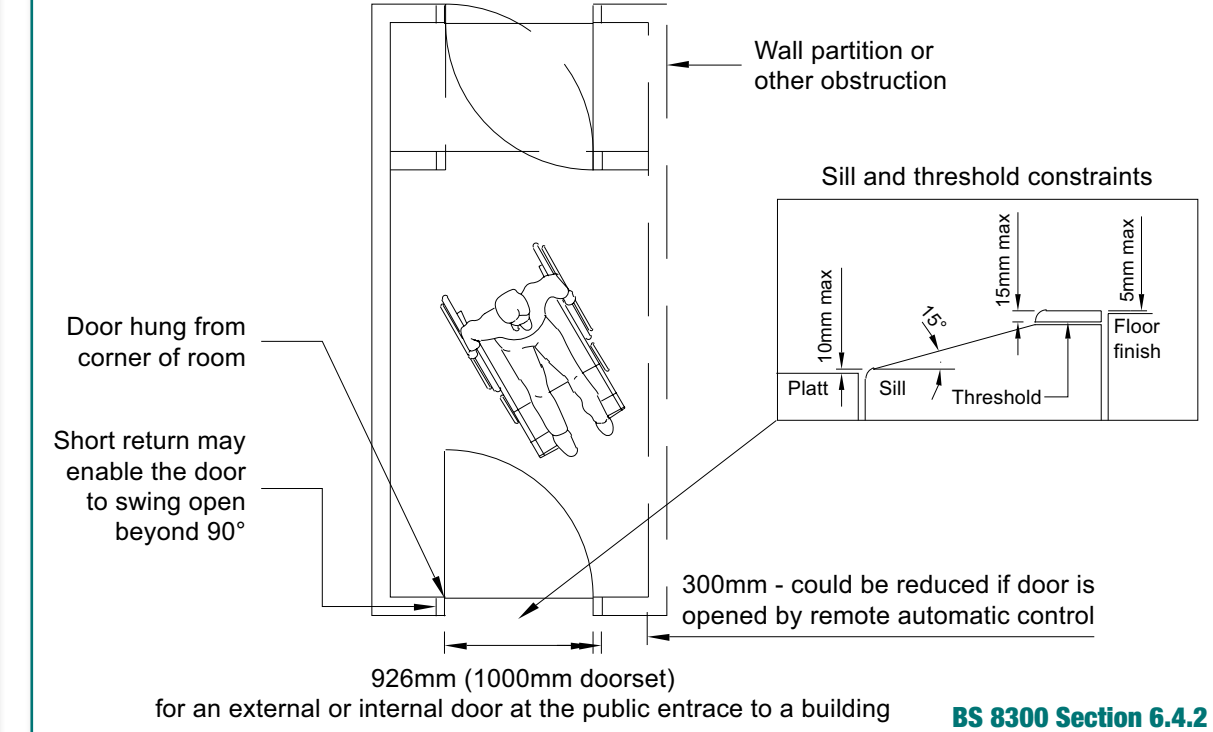
entrances

Public buildings



doorways

Door location and side clearance



sensory

Hearing

- Induction loops or infra red systems should be installed in conference rooms, churches, auditoria – also booking and ticket offices
- Red flashing warning lights should be fitted in public places; visual indicators
- Portable Vibra-alarms should be available for hotel bedrooms

Visual

- Use colour contrast, textured and tactile surfaces, audible indicators
- Avoid obstacles

Hearing and Visual

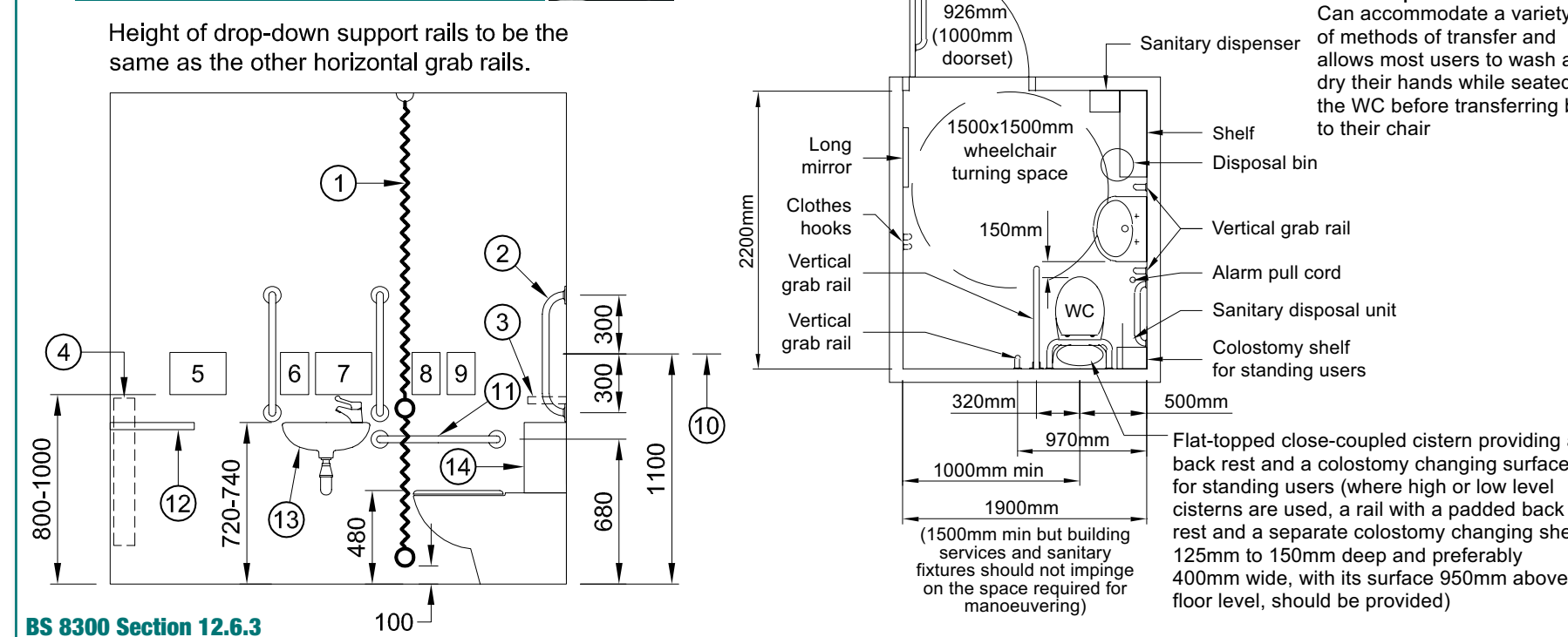
- Well-lit areas are essential for lip-reading and partial vision

Floors and Wall Surfaces

- Avoid glare from ceilings, walls and floors
- Avoid deep pile carpets which some wheelchair users will find difficult to propel over
- Avoid confusing patterns on any floorcoverings. Use contrasting colours between floorcovering and furniture
- Floor finishes should be non-slip wet or dry, impervious, non-glossy
- Avoid unexpected changes in level
- Use lighting, colours and texture to warn of low ceilings and changes in level. Avoid wall projections. Where possible, site radiators in recesses and/or use covers as protection

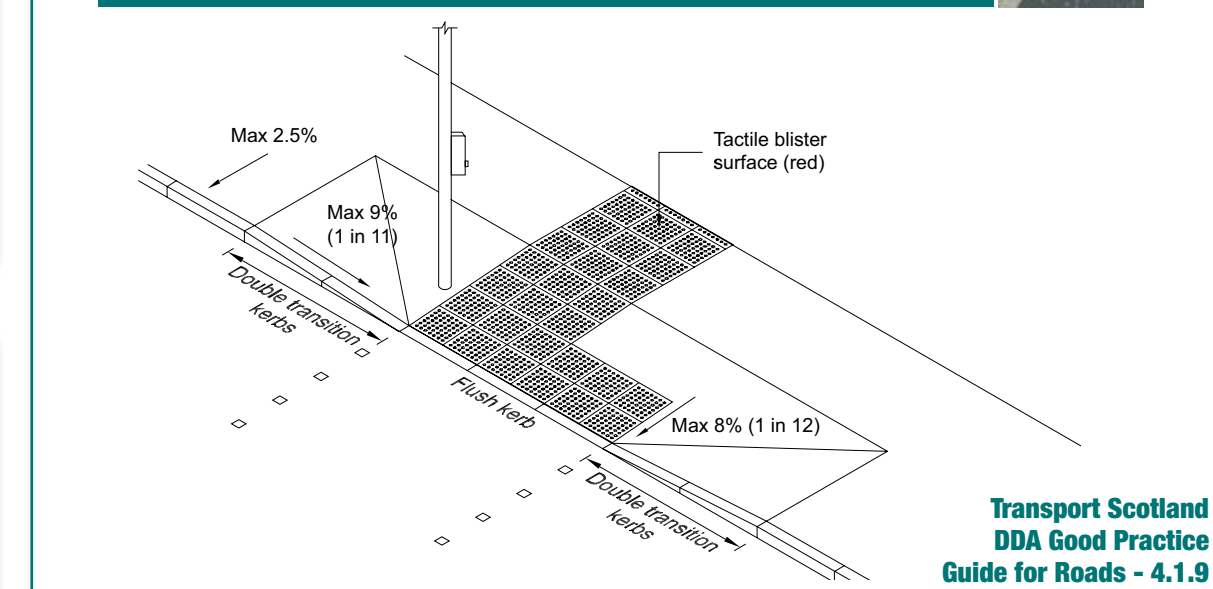
toilets

Unisex accessible WC layouts

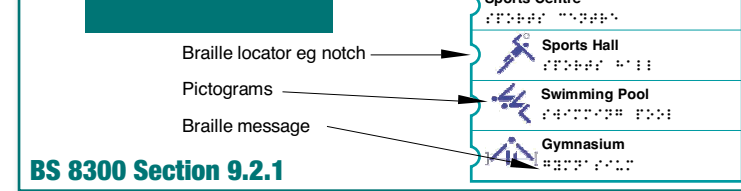


crossings

Example of blister surface at controlled crossing point



signs



symbols

