

Cycling around MIDLOTHIAN

This map gives a simplified overview of Midlothian's cycle facilities, plus useful cycle links into the City of Edinburgh and East Lothian.

For more detailed information see the **Spokes** maps of **Midlothian**, **Edinburgh** and **East Lothian**, available from most local cycle shops or on-line from: www.spokes.org.uk

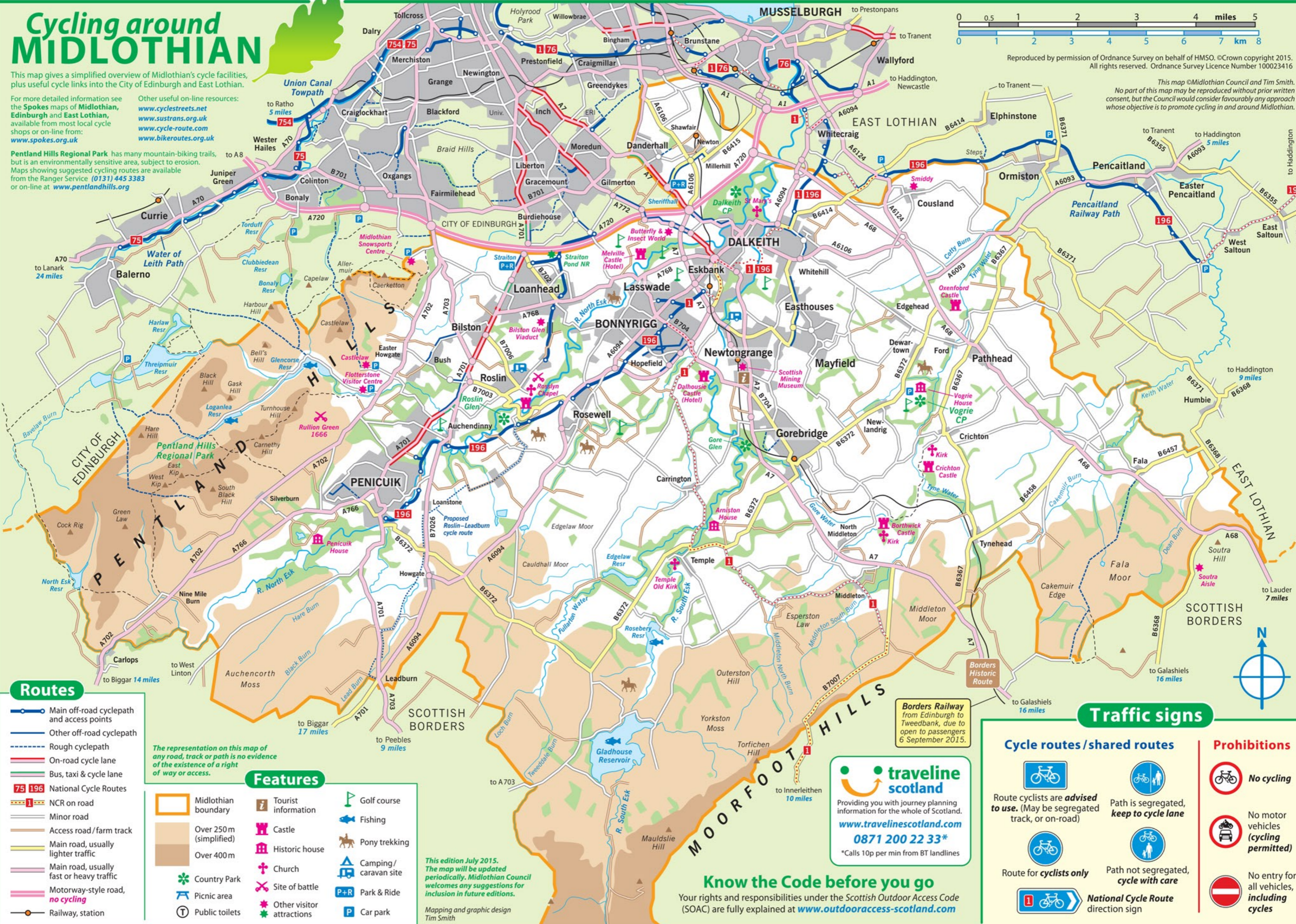
Other useful on-line resources: www.cyclestreets.net, www.sustrans.org.uk, www.cycle-route.com, www.bikeroutes.org.uk

Pentland Hills Regional Park has many mountain-biking trails, but is an environmentally sensitive area, subject to erosion. Maps showing suggested cycling routes are available from the Ranger Service (0131) 445 3383 or on-line at www.pentlandhills.org



Reproduced by permission of Ordnance Survey on behalf of HMSO. © Crown copyright 2015. All rights reserved. Ordnance Survey Licence Number 100023416

This map © Midlothian Council and Tim Smith. No part of this map may be reproduced without prior written consent, but the Council would consider favourably any approach whose objective is to promote cycling in and around Midlothian.



Routes

- Main off-road cycle path and access points
- Other off-road cycle path
- Rough cycle path
- On-road cycle lane
- Bus, taxi & cycle lane
- National Cycle Routes
- NCR on road
- Minor road
- Access road/farm track
- Main road, usually lighter traffic
- Main road, usually fast or heavy traffic
- Motorway-style road, **no cycling**
- Railway, station

The representation on this map of any road, track or path is no evidence of the existence of a right of way or access.

Features

- Midlothian boundary
- Over 250m (simplified)
- Over 400m
- Country Park
- Picnic area
- Public toilets
- Tourist information
- Castle
- Historic house
- Church
- Site of battle
- Other visitor attractions
- Golf course
- Fishing
- Pony trekking
- Camping/caravan site
- Park & Ride
- Car park

This edition July 2015. The map will be updated periodically. Midlothian Council welcomes any suggestions for inclusion in future editions. Mapping and graphic design Tim Smith

traveline scotland
Providing you with journey planning information for the whole of Scotland.
www.travelinescotland.com
0871 200 22 33*
*Calls 10p per min from BT landlines

Know the Code before you go
Your rights and responsibilities under the Scottish Outdoor Access Code (SOAC) are fully explained at www.outdooraccess-scotland.com

Traffic signs

- Cycle routes / shared routes**
 - Route cyclists are **advised to use**. (May be segregated track, or on-road)
 - Route for **cyclists only**
- Prohibitions**
 - No cycling**
 - No motor vehicles (cycling permitted)**
 - No entry for all vehicles, including cycles**
- Path rules**
 - Path is segregated, **keep to cycle lane**
 - Path not segregated, **cycle with care**
- National Cycle Route** direction sign