



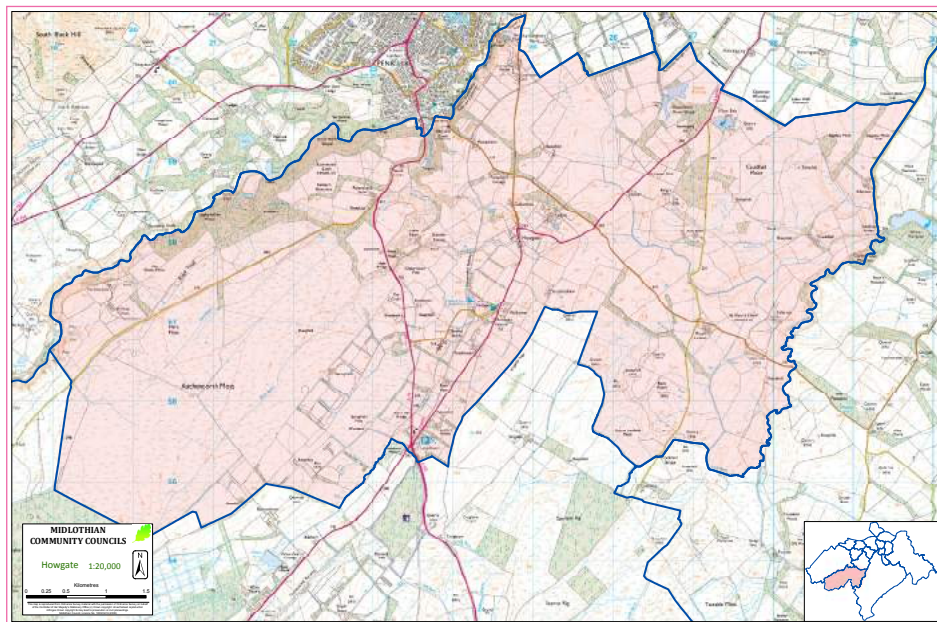
HOWGATE

Neighbourhood Plan 2015 – 2020

September 2015

Contents

- | | |
|--|--|
| 3. Howgate and its history | 7. Why people like living in Howgate |
| 4. Howgate today | 8. Results from the survey |
| 5. What is going on in Howgate | 11. Comments gathered at the feedback event |
| 6. What people said about their community | 16. Action plan |



Contact: Stephen Berington, Senior Communities Officer

Midlothian Council
Fairfield House, Dalkeith EH22 3ZQ

Tel: 0131 271 3338

Email: stephen.berington@midlothian.gov.uk

neighbourhood.planning@midlothian.gov.uk

Introduction

Midlothian Moving Forward, the Community Planning Partnership, through Neighbourhood Planning, is about improving local communities in a way that brings together local residents with agencies in order to identify and find local solutions to local issues.

This plan focuses on the Howgate Community Council area and describes the area it represents and lists the changes, developments and improvements local residents would like to see taking place. A steering group of community representatives working with different agencies was formed to find out what the local issues and concerns are and to take forward the plan.

The Howgate Neighbourhood Plan recognises and values the strengths of local communities and local residents, and seeks to build upon their knowledge, skills and expertise.

Howgate and Its History

Howgate was best known for 'The Howgate Inn' in the 50s and 60s which is today replaced by the 'Howgate Restaurant'

The school and shops have disappeared too but Howgate Kirk established at the Secession of 1742 is the heart of the Community with lots of activities every week in the hall attached to the church. The Scottish Woman's Rural Institute has recently celebrated its 90th Birthday.

Originally, Howgate was the first stop for the stage coaches out of Edinburgh on route to Moffat, Dumfries or Peebles. Horses would be changed and everyone fed at the 'Old Howgate Inn'.

The railway running parallel to Howgate, coming from Hardengreen via Loanstone, through Pomathorn (main station for Penicuik at one time), passed Venturefair then on to Leadburn junction, brought jobs to the area.

All the countryside around the village is within the Howgate Community Council area with 50 houses in the village itself. There are still family sheep and cattle farms round about though farming has changed greatly in 300 years.

On the little road down from the Howgate Restaurant is the Scottish Wildlife Trust Milkhall Pond which was once the Reservoir for Cowan's paper mill now a peaceful place to watch and listen.

There is much more to tell so reference can be made to the recently printed book '*STORIES from HOWGATE VILLAGE*'



Howgate Today

The figures from the 2001 census record a population of 336 people living in the Howgate area, living in 136 properties. Today with figures from the 2011 census there is a population of 451 in 179 properties, showing an increase in population of 34.2% and an increase of housing by 31.6% over a 10 year period. The breakdown of the population is 50.3% female, 49.7% male, with 21.7% under 16, 64.1% working age, 14.2% aged 65 or over. Compared to Midlothian and Scotland, Howgate has a larger percentage of residents aged 65 and over as well as a slightly larger percentage of children compared to Midlothian and Scotland.

What is Going on in Howgate

Howgate is a lively community with a busy and well used Village Hall. Some of the activities offered there are listed below:



- Howgate Health Project
- Howgate in Bloom
- Bridge Club
- French Conversation Classes
- Leadburn Community Woodland
- Howgate Community Council Meetings
- Pub Quiz Nights, BBQs
- History Group
- Art for All
- Summer Playscheme
- Babies and Beyond
- Leisurely Lunches
- S Club
- Howgate Village Hall Assoc
- Neighbourhood Watch
- Ceilidh, Parties and Discos
- Family Fireworks and Bonfires
- French Evening and Art Exhibitions



What People Said About Their Community

To develop the Howgate Neighbourhood Plan two events were organised; these have generated discussion and conversations about what it is like living in the Howgate area and what the priorities are for the community.

The events have come in the form of Community Gathering Events, which set the scene for Neighbourhood planning. Following on from these community events the steering group created a post-card survey based on six main issues, which had been identified in the Community Gathering. The postcard entitled 'Welcome to Howgate' was delivered to the residents in the Howgate Community Council Area. Community members were asked their opinion on six areas identified, stating how important they felt each area was to them.

Why People Like Living in Howgate

These statements were gathered from a community consultation event on the 11th September 2014.

Small community feel, family feel to the community, lots of children

The pub

The people

Greater community use of church field e.g. football pitch etc.

An active church and congregation

Environment

Leadburn Community Wood

Incoming community brought people together

Active community – running, walking, safe routes.

Good Communication

Active community council

An active, welcoming and caring community

Open spaces, natural beauty, rural, views

Rural feel but close to Edinburgh

Everything that happens in the Hall

Need more traffic calming

Local play park

Regular information about the community comes through the door – upcoming events etc.

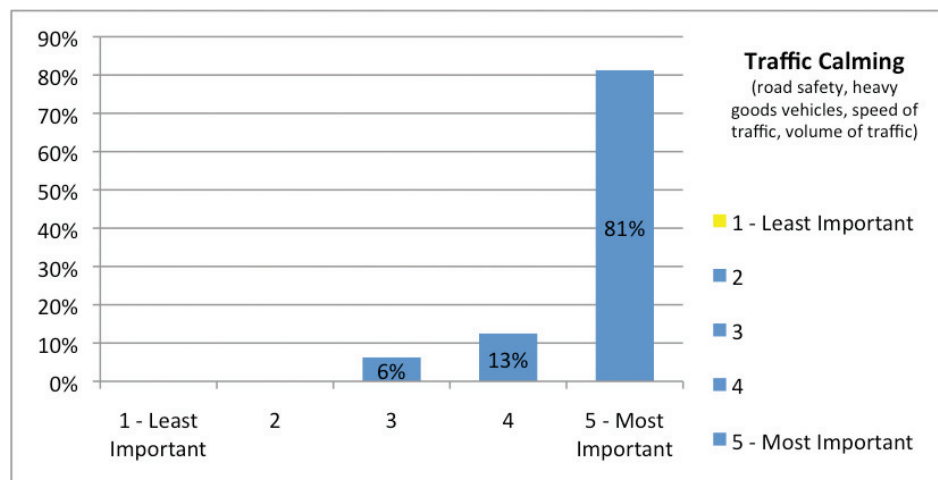
Leadburn and Play area

11% of the community responded to the postcard survey and the information was fed back to the community in April 2015.

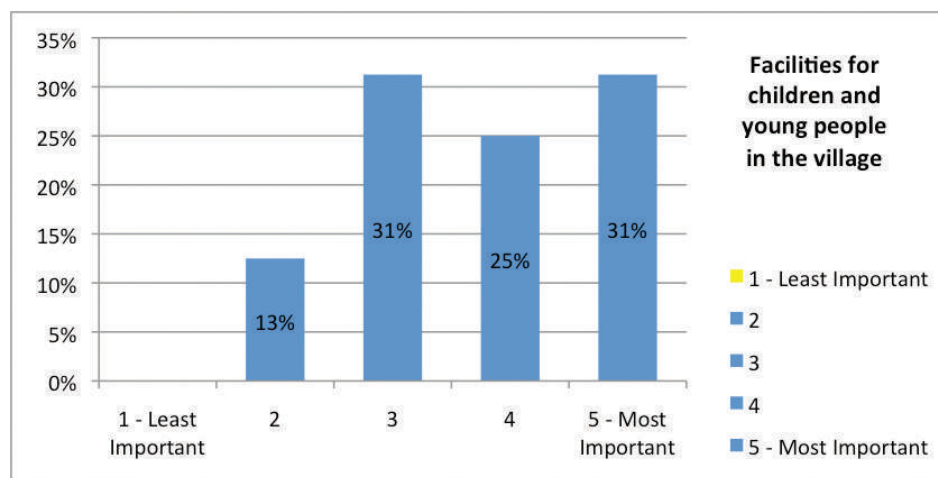
Results from the Survey.

Question 1 – Traffic Calming

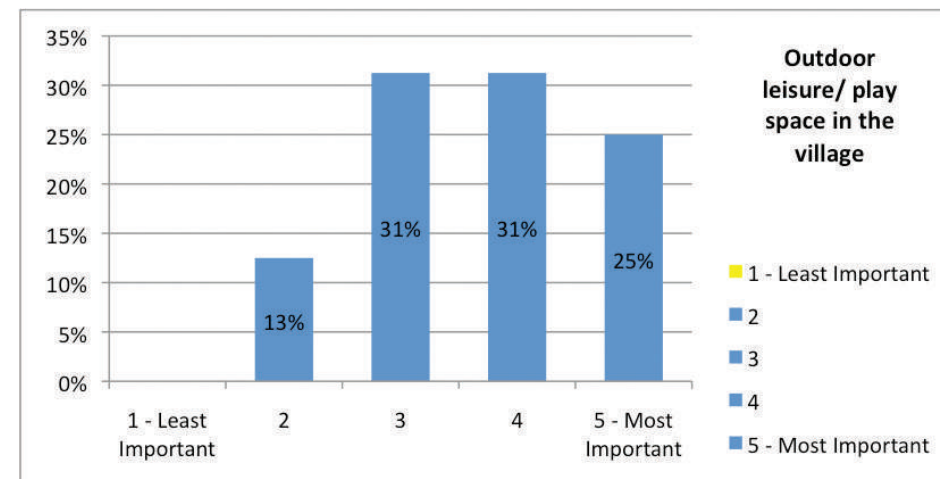
(road safety, heavy goods vehicles, speed of traffic, volume of traffic)



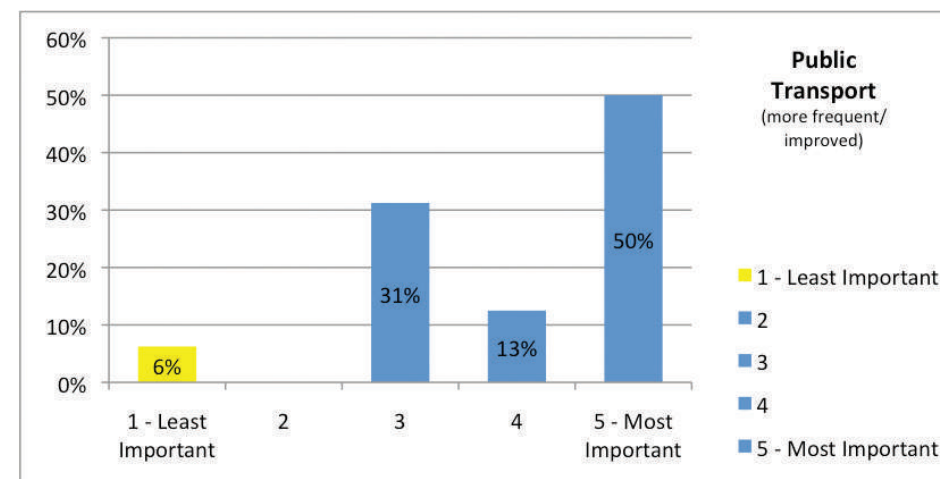
Question 2 – Facilities for children and young people in the village



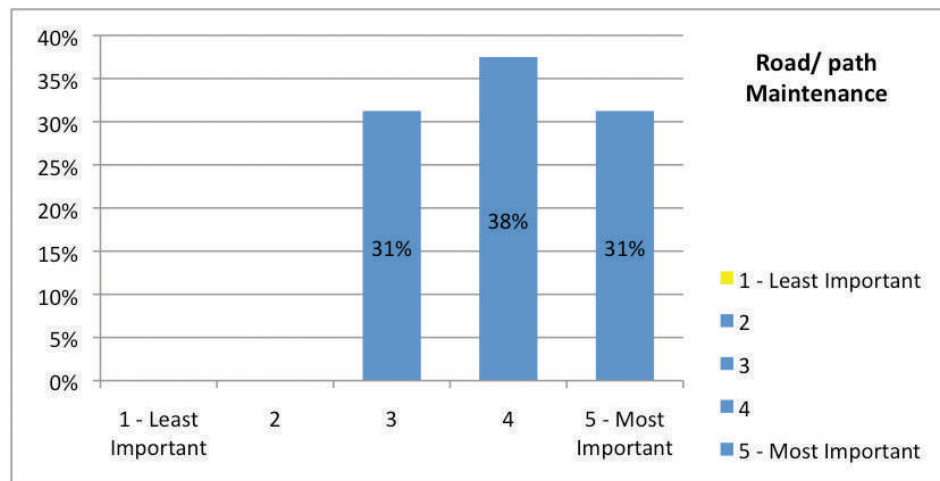
Question 3 – Outdoor leisure/play space in the village



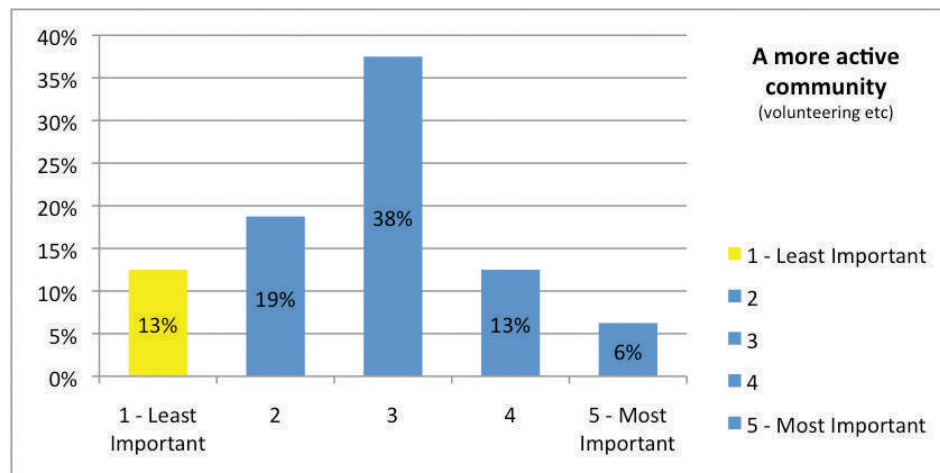
Question 4 – Public Transport (more frequent/improved)



Question 5 – Road/ path Maintenance



Question 6 – A more active community (volunteering etc)



Comments gathered at the feedback event in April 2015.

Participants were invited to take part in round table discussions on each of the six priority areas. The following comments were gathered.

Traffic Calming (road safety, heavy goods vehicles, speed of traffic, volume of traffic)

- Traffic calming/slowing signage at entrance of Tipperwell Way
- Clamp down on boy/girl racers in village at nighttimes
- Loanstone would benefit from traffic calming at entry and exit to the hamlet in view of excessive number of accidents there.
- Public transport is essential for the road due to increase in housing.
- Speed restrictions e.g. chicane, give way to ongoing traffic to Penicuik
- 60mph too fast between Loanstone and Howgate
- Position sign on Tipperwell Way entrance to "Slow down Children Playing"
- Reduce speed limit on incoming roads from 60 – 50 or even 40 (**LOTS of accidents on these routes**)

Outdoor leisure/play space in the village

- Playpark at back of church at the church and access from Tipperwell Way
- Community Garden as part of the development
- Maintaining status of conservation area is important to future developments and planning
- A community woodland/garden in The Glebe

Public Transport (more frequent/improved)

- A regular bus service into Edinburgh would be good
- Conversation on Transport Policy regulations a co-production model where community raise the money for improvements

Road/ path Maintenance

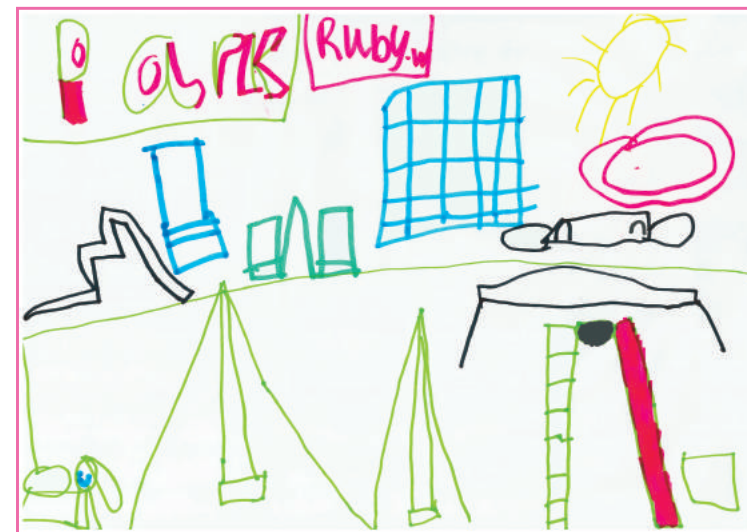
- Link to proposed footpath on old Leadburn railway line from Howgate
- Safe pathway from village to Milkhall Pond/restaurant
- Please look at developing cycle path on old railway line
- Footpath link from Falhills to village from Tipperwell Way and The Glebe
- Good walking routes which link up would be useful as road traffic heavy if using pavement

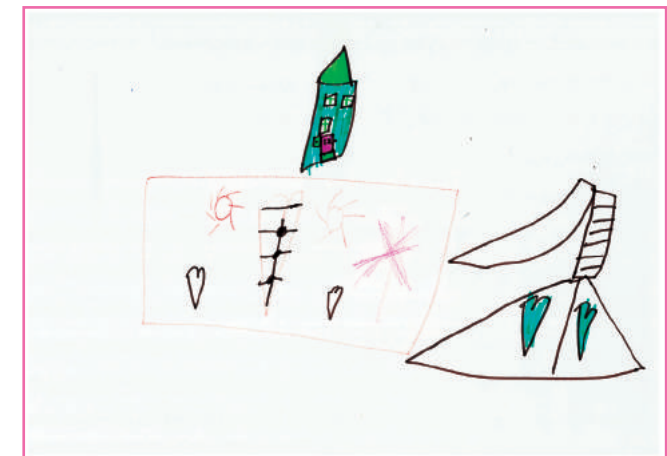
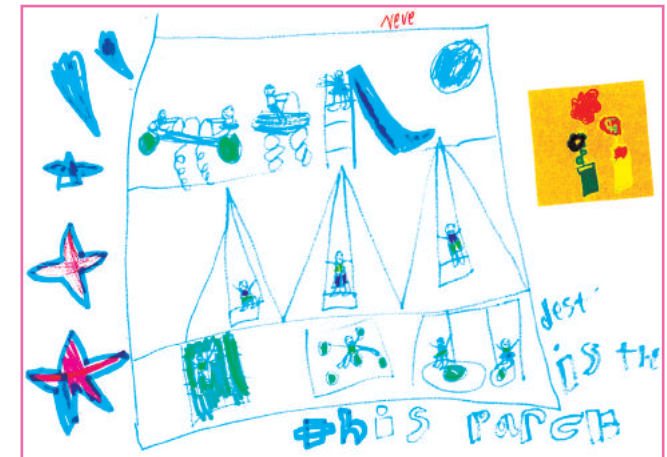


Facilities for children and young people in the village

- Facilities for Children

Children's views were gathered at the event through discussions and drawing. The children spoke a lot about play parks and spaces to play please see their views in the pictures below.



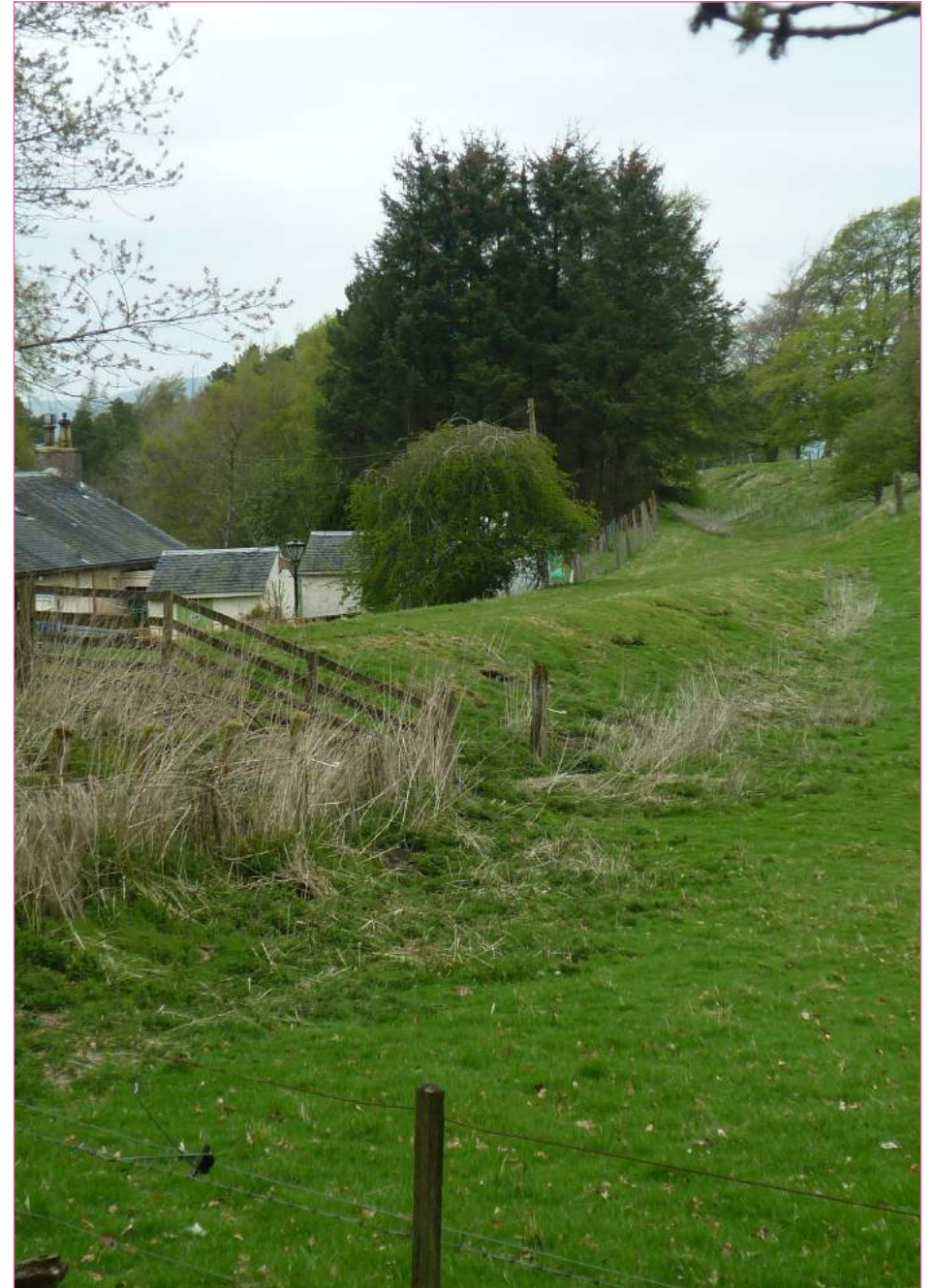


Action Plan

The information gathered has given a clear indication of the priorities for the community.

Howgate Community Council will progress and implement the Neighbourhood plan in partnership with Midlothian's Community Planing Parties.

	Key Issues	Suggestion/ Solutions/Actions	Timescale	Lead Group/Agency
1	Speed of traffic in the area	Explore provision of speed reduction and other road safety measures	1-3 years	Police Scotland Midlothian Council – Road Services and Community Safety Partnership
2	Visibility of road signs and road markings	Improve road signs and maintenance of road marking, cut back foliage	1-3 years	Midlothian Council – Road Services and Community Safety Partnership
3	Regular bus service into Edinburgh	Suggested improvements to the X70 once-a-day Mon-Fri commuter bus from Peebles to Edinburgh via Howgate. Improve communication about the Ring & Go service Update on Ring and go on community Notice Board	6 months	Midlothian Council Travel Team
4	Improvement of safety of pedestrians and cyclists	Explore options for improvement and creation of walkways and cycle path in area Start discussions about development of railway line Leadburn to Pomothorn (Penicuik)	3 – 5 years	Sustrans Midlothian Council – Land Services Howgate Community Council
5	Development of Glebe area to create recreational and social space for adults and young people	Explore options to develop outdoor space Conduct a consultation to gather community ideas	1-3 years	Howgate Community Council Midlothian Council – Communities Team
6	Volunteers to support the community Hall/ Activities	Recruitment campaign	6months – 1year	Howgate Community
7	Site of Wellington School and its proposed future	Monitoring future developments/impact	ongoing	Midlothian Council Planning Dept
8	Proposed reopening of Cauldhall Opencast Mine	Monitoring future developments/impact	ongoing	Midlothian Council Planning Dept





COMMUNICATING CLEARLY

We are happy to translate on request and provide information and publications in other formats, including Braille, tape or large print.

如有需要我們樂意提供翻譯本，和其他版本的資訊與刊物，包括盲人點字、錄音帶或大字體。

Zapewnimy tłumaczenie na żądanie oraz dostarczymy informacje i publikacje w innych formatach, w tym Braillem, na kasie magnetofonowej lub dużym drukiem.

ਅਸੀਂ ਮੰਗ ਕਰਨ ਤੇ ਖੁਸ਼ੀ ਨਾਲ ਅਨੁਵਾਦ ਅਤੇ ਜਾਣਕਾਰੀ ਤੇ ਹੋਰ ਰੂਪ ਵਿੱਚ ਪ੍ਰਕਾਸ਼ਨ ਪ੍ਰਦਾਨ ਕਰਾਂਗੇ, ਜਿਨ੍ਹਾਂ ਵਿੱਚ ਬਰੇਲ, ਟੇਪ ਜਾਂ ਵੱਡੀ ਛਪਾਈ ਸ਼ਾਮਲ ਹਨ।

Körler için kabartma yazılar, kaset ve büyük nüshalar da dahil olmak üzere, istenilen bilgileri sağlamak ve tercüme etmekten memnuniyet duyuyoruz.

اگر آپ چاہیں تو ہم خوشی سے آپ کو ترجمہ فراہم کر سکتے ہیں اور معلومات اور دستاویزات دیگر شکلوں میں مثلاً بریل (ناپید افراد کے لیے) اچھے ہونے والے حروف کی لکائی، میں، ٹیپ یا بڑے حروف کی لکائی میں فراہم کر سکتے ہیں۔

Contact 0131 270 7500 or email: enquiries@midlothian.gov.uk



Midlothian