

This School was reop
o'clock, the usual ho
ared 19 boys and 20
latter 9, had not atte
none of them had lear
umar or Geography, an



Midlothian Council Archives

An Introductory Guide



Arrangement of this Guide

You are probably familiar with the arrangement of a traditional library. All of the books on a particular subject are kept together in one place. Archives are arranged differently. They are arranged by collection or series to protect the original order of the records. Each section is given a unique identifying code (for example, Midlothian Burgh Council has the prefix MBC).

This means that information on a particular subject may be located in more than one part of the archive.

This guide has been organised by general themes which correspond to the way that the archive has been catalogued. There is some overlap between sections so it is worth checking between them. There is a glossary of unfamiliar terms and an index at the rear of the guide.

<i>Section</i>	<i>Title</i>	<i>Page</i>
1	Local Authority Records	2
2	People, Family and Communities	9
3	Land and Estate Records	16
4	Business and Trade Records	17
5	Unions, Guilds and Associations	17
6	Politics and the State	18
7	Leisure and Recreation	18
8	Church and Philanthropy	19
	Glossary	20
	Index	21
	Map of Midlothian	

Midlothian is the local government area to the south of Edinburgh. Midlothian Council Archive and Local Studies Service holds records documenting the history and culture of the local area. Many of the records in these collections are unique and you will not find them elsewhere. The collections are invaluable if you are interested in Midlothian, including family history.

This guide gives details about the Midlothian archive collections and the types of material that you will find in them. More detailed catalogues about the collections are available at Midlothian Local Studies.

Planning Your Visit

The collections can be accessed at Library Headquarters in Loanhead, where experienced staff will be pleased to help and advise you. Local Studies holds a wide range of material to assist you with your research, including:

- Books and trade directories
- Historic photographs and images
- Historic newspapers
- Censuses (1841-1901) and Old Parish Registers
- Maps, postcards and ephemera

The collections are open to anybody whether or not they are resident in Midlothian and access is free. You will be asked to register before using the archive. Please bring proof of identity on your first visit, including your name and address.

We take enquiries by telephone, letter, e-mail or in person. Contact details are given on the rear of this guide. We will always try our best to help you, but please note that we are unable to undertake detailed research on your behalf. You do not need to make an appointment to use the service, but it is always helpful to contact us in advance so that we can make material ready for you. Some items are stored off-site and it may take several days to recover them for you.

Facilities include microfilm and microfiche readers as well as public access computers, any of which can be reserved. There is a chargeable photocopying service, but please note that some parts of our collection are fragile and cannot be copied because this would damage them. There is free on-street parking near to Library Headquarters. Disabled parking and access is available and there is a disabled toilet in Local Studies.

We are constantly acquiring new material. Please ask if you cannot find what you are looking for in this guide, as some items may not be listed. We are always pleased to accept donations of relevant material and can offer you advice about your own archives and records.

We hope that you will find this guide useful and we look forward to helping you in future.

Section 1: Local Authority Records

MBC Midlothian Burgh Records		
<p>Burghs were communities with special privileges conferred by charter and which had a municipal corporation, often known as the town council. The current Midlothian area included the burghs of Dalkeith (1401), Bonnyrigg (1865), Penicuik (1867), Lasswade (1881), Loanhead (1884), and Bonnyrigg and Lasswade (1929). Burgh councils were responsible for the management of their local area, including education, building control, street cleaning and lighting. Burgh councils were abolished in 1975, when they were replaced by district and regional councils.</p>		

Burgh of Bonnyrigg and Lasswade		
MBC/1/1-55	Commissioners' minute books (1865-1901) , Town Council minute books (1901-1975 incomplete)	1865-1975
MBC/2/1-4	Committee minute books, including swimming pool committee (1965-75)	1901-1975
MBC/3/1-3	Dean of Guild Court register of plans and sections	1948-1969
MBC/4	Abstract of accounts	1937

Burgh of Dalkeith		
MBC/5/1-45	Trustees' minute books (1760-1878) , Commissioners' minute books (1878-1902) , Town Council minute books (1901-1975 incomplete)	1760-1975
MBC/6/1	Local authority minute book	1871-1878
MBC/7/1-2	Dean of Guild Court minute books	1940-1965
MBC/8/1-2	Licensing Court register of applications	1933-1960
MBC/9/1-2	Commissioners' ledgers	1878-1909
MBC/10/1-40	Burgh Chamberlain cashbooks, receipt books, ledgers, housing schemes	1857-1965
MBC/11/1-7	Parochial Board and Parish Council minute books (1847-1926 incomplete), Burial Ground Committee minute book (1871-1878), summary of decisions book (1867-1880)	1847-1926
MBC/12/1-7	Burgh court books, including ordinary court books (1942-1953), adult police court book (1961-1965), juvenile court registers (1936-1964)	1936-1964
MBC/13/1-6	Burgh cartulary (1831-1925), pensions committee minute book (1908-1949), rents of meetings book (1906-1910), arrears of rates book (1883-1903), receipt stubs for assessments (1916-1917)	1831-1949
MBC/14	Burgh of Dalkeith sewerage work specifications and schedules	1900-1903
MBC/15	Registration book of places for public refreshment, Dalkeith	1971

Burgh of Lasswade		
MBC/16/1-3	Commissioners' and Town Council minute books	1881-1929

Burgh of Loanhead		
MBC/17/1-29	Town Council minute books	1901-1975
MBC/18/1	Commissioners' minute book	1891-1900
MBC/19/1-6	Local authority minute book (1890-1900), committee minute books (1890-1909), Loanhead and Polton Nursing Association minute book and cashbook (1916-1953)	1890-1953
MBC/20/1	Dean of Guild Court register of warrants for minor alterations	1949-1967
MBC/21/1-17	Abstracts of accounts	1948-1973
MBC/22/1	Assessment roll	1963-1966
MBC/23/1-8	Loanhead Water Association minute books (1815-1878 incomplete), cashbooks (1814-1894 incomplete), feuars list and assessment rolls (1843-1887)	1814-1894
MBC/24	Burgh of Loanhead chartularies	1852-1941

Burgh of Penicuik		
MBC/25/1-5	Police Commissioners' minute books	1867-1901
MBC/26/1-23	Town Council minute books	1901-1960
MBC/27	Queries and opinion for the Police Commissioners of Penicuik	1895

MCC Midlothian County Council Records		
Midlothian County Council was established in 1889 to administer the county or landward area of Midlothian. The County Council had six district committees (Calder, Gala Water, Lasswade, Newbattle, Penicuik and Suburban), which became district councils in 1929. This section also includes records from local parochial boards which were established in 1845 to administer poor relief. They were replaced by elected parish councils whose functions were in turn taken over by Midlothian County Council.		

MCC/1/1-28	Poor relief and public assistance records	1917-1963
MCC/2/1-8	Legal records, including opinion book (1891-1964), memorials for the opinion of the Council (1958-1969), oaths of Justices of the Peace (1910-1925), register of bonds and grants (1921-1946), registers of deeds and documents (1950-1956), register of contracts, agreements and mortgages (1947-1950), feu dispositions (1957-1962)	1891-1969
MCC/3/1-9	Council minute books	1910-1975
MCC/4/1-27	Sub-committee meetings (Districts, Special) minute books, including Calder District (1910-1930), Gala Water District (1910-1930), Lasswade District (1890-1904), Suburban District (1910-1920), County Road Board (1910-1929), Executive Committee under the Diseases of Animals Acts (1918-1930), Central Committee for Maternity and Child Welfare (1918-1930), Probation Committee (1933-1938), South-east Counties of Scotland Sanatorium Board (1914-1943), Midlothian Venereal Diseases Joint Committee (1920-1930), Standing Joint Committee for Police (1910-1930), Braehead Water District (1897-1933), Edgefield Special Water District (1901-1926), Loanstone Special Water District (1893-1909), Newtongrange and Easthouses Lighting District (1901-1930), Pathhead Special Lighting and Scavenging District (1901-1948), Roslin Lighting and Scavenging District (1895-1942), Roslin Special Water and Drainage District (1937-1953)	1890-1953

Gala Water District Council		
MCC/5/1-5	Minute books	1930-1975
MCC/6/1-2	Heriot Parish Council minute books	1895-1930
MCC/7/1-2	Abstracts of accounts	1931-1974
MCC/8/1	Relieving minute book	1943-1948
MCC/9	Steamrolling logbook	1932-1934

Lasswade District Council		
MCC/9/1-3	Minute books	1934-1975
MCC/10/1-3	Abstracts of accounts	1932-1974

Newbattle District Council		
MCC/12/1-21	Minute books	1930-1975
MCC/13/1-2	Abstracts of accounts	1931-1975

Penicuik District Council		
MCC/14/1-3	Minute books	1932-1975
MCC/15/1-3	Abstracts of accounts	1931-1974
Licensing Court of Appeal for the County of Midlothian and for the Burghs of Dalkeith and Musselburgh		
MCC/16/1-2	Minute books	1947-1970
Borthwick Parochial Board/Borthwick Parish Council		
MCC/19/1-5	Minute books	1846-1930
Carrington Parochial Board/Carrington Parish Council		
MCC/20/1-2	Minute books	1879-1930
Cockpen Parish Council		
MCC/21/1-3	Minute books (1895-1930), collector's book (1922-1930)	1895-1930
Cranston Parochial Board/Cranston Parish Council		
MCC/22/1-3	Minute books	1846-1930
Glencorse Parochial Board/Glencorse Parish Council		
MCC/23/1-5	Minute books	1845-1930
Lasswade Parochial Board/Lasswade Parish Council		
MCC/24/1-13	Minute books (1851-1936), Burial Ground Committee minute book (1886-1930)	1851-1936
Lasswade Joint Committee		
MCC/25/1-2	Minute books	1930-1942
Newbattle Parochial Board/Newbattle Parish Council		
MCC/27/1-6	Minute books	1845-1930
Penicuik Parochial Board/Penicuik Parish Council		
MCC/28/1-8	Minute books	1874-1930
Penicuik Joint Committee		
MCC/29/1-2	Minute books	1930-1948
Temple Parochial Board/Temple Parish Council		
MCC/30/1-3	Minute books	1846-1920
Midlothian County Council Miscellaneous		
MM/31	Book of applications for licences to deal in game, Midlothian	1953-1981
MM/32	Register of certificates (House to House Collections Act, 1939)	1939
MM/33	Register of licences under Cinematograph Act 1909, Midlothian County Council	1912-70

SB, SLB, ME & ML Midlothian Education & Libraries Records		
This section lists school logbooks, letter-books and cashbooks from the 1860s onwards which provide an insight into schools and education in Midlothian. There is also a set of school admission registers which list pupil names and records of libraries in Midlothian.		

School Board Letter-books		
SB/1/1-76	Borthwick (1875-1919), Cockpen (1907-1920), Crichton (1913-1918), Dalkeith (1876-1920), Dalkeith landward (1888-1912), Glencorse (1897-1919), Lasswade (1896-1919), Newbattle (1873-1919), Newton (1873-1919), Penicuik (1881-1919), Stobhill (1902-1919)	1873-1920

School Board Cashbooks and Ledgers		
SB/2/1-77	Borthwick (1881-1919), Carrington (1873-1919), Cockpen (1902-1919), Cranston (1903-1919), Crichton (1892-1919), Dalkeith (1903-1919), Fala and Soutra (1909-1919), Glencorse (1873-1919), Lasswade (1873-1919), Newbattle (1873-1919), Newton (1873-1919), Nine-Mile-Burn (1910-1919), Penicuik (1873-1919), Stobhill (1874-1919), Temple (1873-1919)	1873-1919

School Admission Registers		
SB/3	Cockpen Infant (1944-1947), Cockpen Public (1873-1923), Cranston (1874-1993), Fala and Soutra (1904-1994), Gavieside (1874-1939), Glencorse (1873-1942), Lasswade Public (1874-1927, 1955-1975), Roslin Public (1885-1957), St Matthew's, Rosewell (1905-1976) , Temple (1909-2007), Toxside (1888-1955)	1873-2007

Educational Bequests, Registers of Mortgages, Mortifications and Trusts		
SB/4/1-25	Kinnaird fund (Borthwick) cash, minute and stock books (1885-1919), James Gray bursary trust (Dalkeith) sederunt book (1919-1933), Peter Herkes trust (Fala and Soutra) cashbook (1900-1917), Glencorse register of mortgages (1875-1909), Johnston bequest (Heriot) cashbook (1886-1918), Inveresk register of mortgages (1879-1918), Kirknewton and East Calder register of mortgages (1874-1918), Lady Gibson bequest (Pentland) cashbook (1888-1919), Moodie's mortification (Mid Calder) account book and register of mortgages (1878-1919) , Stephenson bequest (Newbattle) (1889-1907), Newton register of mortgages (1878-1915), Stobhill register of mortgages (1885-1912), Stow register of mortgages (1877-1879), West Calder register of mortgages (1877-1905), Charles Smith's mortification sederunt books (1847-1932) , Mrs Tweedie's trust sederunt book (1911-1932)	1847-1933

School Board Minute Books		
SB/5/1-16	Heriot minute book (1873-1889), Newton minute books (1871-1921), Stobhill minute books (1867-1930) and register of teachers (c1912-1919)	1867-1930

School Logbooks		
SLB/1-53	Bonnyrigg (1864-1971), Borthwick schools (1864-1972), Carrington Public (1876-1944), Cockpen Public (1873-1950), Cousland Public (1902-1967), Cranston Primary (1890-1941), Crichton Public (1873-1947), Dalkeith schools (1865-1974), Easthouses Public (1876-1907), Fala and Soutra Public (1910-1964), Glencorse Public (1875-1972), Gorebridge schools (1880-1963), Howgate (1873-1941), Lasswade Parish (1866-1919), Loanhead Public (1897-1967), Newbattle Public (1900-1962), Newtongrange Public (1929-1953), Nine-Mile-Burn Public (1892-1925), Old Craighall Public (1919-1920), Pathhead St Mary's RC (1889-1920) , Penicuik schools (1864-1965), Pentland Public (1938-1960), Rosewell St Matthew's RC (1894-1952) , Roslin Public (1949-1972), Temple Public (1903-1962)	1864-1974

Midlothian County Committee on Secondary Education		
ME/1/1-9	Letter books	1894-1919

Midlothian Education Authority Reports, Minutes and Accounts		
ME/2/1-17	Report on the medical inspection of school children (1920), reports on school health administration (1921-1930), reports on day schools (1919-1930), minutes of meetings (1919-1930), annual accounts of receipts and expenditure (1919-1930)	1919-1930

Reports on Schools		
ME/3/1	Reports on schools (printed)	1930-1939

Correspondence of Midlothian Secondary Education Committee		
ME/4/1-9	Letters and papers from the Scotch Education Dept (1912-1916), letters received (1913-1919), letters chiefly to District Council office (1947-1948)	1912-1948

Midlothian Education Authority		
ME/5/1	School Management Committee minute book	1919-1929

Midlothian County Council Education Committee Minutes of Meetings		
ME/6/1-9	Education Committee minute book (1909-1912), Committee on Secondary Education minute book (1913-1919), Midlothian Education Committee minute books (1939-1947), Studies, Staffing and Libraries Sub-committee minutes (1930-1945), Further Education and Finance Sub-committee minute books (1946-1972)	1909-1972

Education Records		
ME/7	Schedules of work for extension to Dalkeith High School	1925

Midlothian Libraries		
ML/1/1-10	Library stock book, book purchase ledgers (1929-1950), librarian's diaries (1921-1925)	1921-1950
ML/2/1-6	Bonnyrigg library stock book, general accession and stock books	1920s
ML/3/1-2	Bonnyrigg and Lasswade Town Council Library Committee minute books	1907-1973
ML/4/1-2	Loanhead Subscription Library minute book (1818-1850) and day book (1832-1853)	1818-1853
ML/5/1	Inventory of the Cowan Institute, Penicuik	1895
ML/6/1-2	West Calder Public Subscription Library supplementary catalogues (1905, 1913)	1905-1913
ML/7/1	Midlothian further education sub-committee agendas and book reports	1947-1975
ML/8/1-4	Librarian's reports (1921-1930) , book issues to schools (1930-1969), returns of book issues (1922-1969)	1921-1969
ML/9	Entries for Midlothian Poetry and Short Story competitions	1992-1995
ML/10	Plans for Gorebridge library	1968-1971

MC Midlothian Burial and Cemetery Records		
This section lists burial registers, lair books and funeral notices for cemeteries and churchyards in Midlothian. These records are useful in finding out where your ancestors were buried.		
MC	Borthwick churchyard burials registers (c1864-1997), funeral notices and death registration certificates (1942-1965); Carrington new churchyard lair book and burial register (1874-1992); Cockpen new churchyard lair book (1950-1960); Cranston new cemetery burials registers, lair certificates and cashbook (1937-1996), funeral notices (1947-1965); Crichton cemetery lair certificates (1843-1977), churchyard ledger (1942-1949) and funeral notices (1949-1965); Dalkeith churchyard registers of interments, ground book and cashbook (1880-1974), Dalkeith 'Watchtower' cemetery lair book, book of interments and burials registers (1862-1972), Dalkeith 'Water-tower' cemetery registers of burials and lairs (1877-1985), Dalkeith new cemetery burials registers, lair-holders register and certificates (1877-1987); Fala churchyard and new cemetery register of interments (1943-1994), funeral notices (1951-1965); Harvieston cemetery burials register and lair-holders certificates (1942-1977); Hawthornden cemetery register of interments, register of lair-holders and lair-holders certificates (c1890-1986); Lasswade churchyards burials registers (1878-1994); Lasswade cemetery burials register (1947-1994); Loanhead cemetery burials register, lair-holders certificates and cemetery committee minutes (1948-1975); Newbattle old cemetery burial registers (1888-1955); Newbattle cemetery list of lair-holders (1950-1960); Newton churchyard and cemetery burials registers (1855-1989); Roslin cemeteries registers of interments (1887-1986)	c1843-1997

Section 2: People, Family and Communities

AFC Andrew Fraser Collection		
Andrew Fraser (1917-2007) was a native of Bonnyrigg and county librarian of Midlothian. His collection is strong on Cockpen parish, including a series of unpublished manuscripts about the history of the parish. The collection also contains scrapbooks, transcriptions, education records, photographs, maps, engravings, and ephemera, all relevant to Midlothian.		
AFC	'Annals of Cockpen Parish' (unpublished manuscripts), transcriptions of Cockpen Old Parish registers, newspaper cuttings files, 'local files', printed records, reports, research notes, notebooks, transcriptions of documents, school reports, programmes, letters, toll collection books, photograph albums, maps and plans of Midlothian, prints, engravings, and original artworks	c1680-2003
BLA The Black Collection		
The Black Collection is a remarkable collection about Penicuik and surrounding area from 1880 to 1930. The bulk of the collection is a series of 151 notebooks containing press cuttings and other ephemera, documenting all aspects of life in Penicuik. The material was assembled by members of the Black family and given to Penicuik library for the benefit of researchers. The entire collection has been microfilmed and indexed, and the microfilms can be consulted both in Penicuik library and Midlothian Local Studies.		
BLA	Notebooks on the history of Glencorse and Penicuik, notebooks on French prisoners of war, notebooks on children's games, Penicuik and Glencorse roll of honour (1914-1918), photographs of Valleyfield papermill, Penicuik parish church magazines (1887-1908), volumes of press cuttings on Penicuik and area, research notes, papers on the Thistle Lodge of Free Gardeners Friendly Society, photographs, ephemera relating to Valleyfield mills and the Cowan family	1875-1980
EBB The Eric Basden Collection		
Eric Basden was an entomologist who lived in Bonnyrigg and Lasswade. He was active in community affairs and his interests are reflected in this collection of local ephemera.		
EBB	Personal material (1970-1980), Lasswade cemetery notices (1916-1947), local government organisations (1950-1982), local shops and businesses (1949-1983), local organisations (1952-1983), local events (1956-1981), political and election material (1955-1983)	1916-1983

FKD Duncan of Firth and Old Woodhouselee		
This collection of papers belonged to three members of the Duncan family: Colonel Francis Kyan Duncan and his two sons Captain Francis Leslie Duncan and George Leslie Duncan. The family was associated with the estates of Firth (Lasswade parish) and Old Woodhouselee. In addition to personal and legal papers, there are also items relating to improvements on the estate and to the development of mineral resources. Some items record the introduction of the local railway. A full listing is available in Local Studies.		
FKD/1-11	Bank passbooks and cashbooks (1856-1887), notes and inventories (1859-1895), papers about the farms of Upper Firth, Firth Mains and Old Woodhouselee (1868-1901), correspondence (1861-1907), mineral papers (1865-1890), Firth House papers (1864-1904), accounts and personal and domestic papers (1895-1897), legal papers, valuations, Penicuik-Roslin railway (1861-1877), plans and sketches (1901-1904), trustees minutes and chartulary (1867-1922)	1856-1922

LUC The Lucas Papers		
The Lucas Papers are named after the Lucas family of Dalkeith, who were medical practitioners in Dalkeith for three generations. The collection contains notebooks, diaries, letters and scrapbooks from the late 19th century onwards, although it also contains earlier material. A full listing is available in Local Studies.		
LUC/1-8	Diaries, notebooks and scrapbooks (1895-1980), papers relating to 'Oxendene', Eskbank (1951), certificates and personal papers (1769-1913) , papers relating to FR Lucas (1905, 1955), papers on Dalkeith local history (20th century), posters (1873-1922), plans (1833-1949)	1756-1955

WE The Don Wauchope of Edmonstone Papers		
The Wauchope (later Don Wauchope) family lived at Edmonstone House in the parish of Newton. This large collection of papers is principally concerned with family and estate business, and contains many legal documents. It also contains papers on Inglis of Cramond, Campbell Kennedy of Dunure, Newton House, Edmonstone brickworks, railways and coal. A full listing is available in Local Studies.		
WE/1-107	Edmonstone title deeds (1702-1917), Magdalene Bridge, Musselburgh title deeds (1802-1927), title deeds (1854-1926), inventories of writs (1698-1861), Don of Newton title deeds (1667-1846), legal papers (1816-1878), financial papers (1900-1965), receipted accounts (1918-1927), family executry papers (1739-1940), trust estates papers (1766-1858), Galloway estate papers (1873-1907), Inglis of Cramond papers (1795-1855), Inverlochy papers (1841-1885), correspondence (1935-1947), personal papers (1853-1957), Edmonstone and Newton Houses papers (1886-1947), Edmonstone brickworks (1863-1885), estate rentals (1727-1874), leases and related papers (1821-1947), papers concerning Niddrie Burn (1808-1897), railways papers (1824-1912), minerals (1852-1952), Moredun housing (1943-1949)	1667-1965



The Lady Victoria pit at Newtongrange was the centrepiece of the Midlothian coal industry. Owned by the Midlothian Coal Company, it was opened in 1895.



Workers at the Ramsay colliery in Loanhead exiting after a shift.



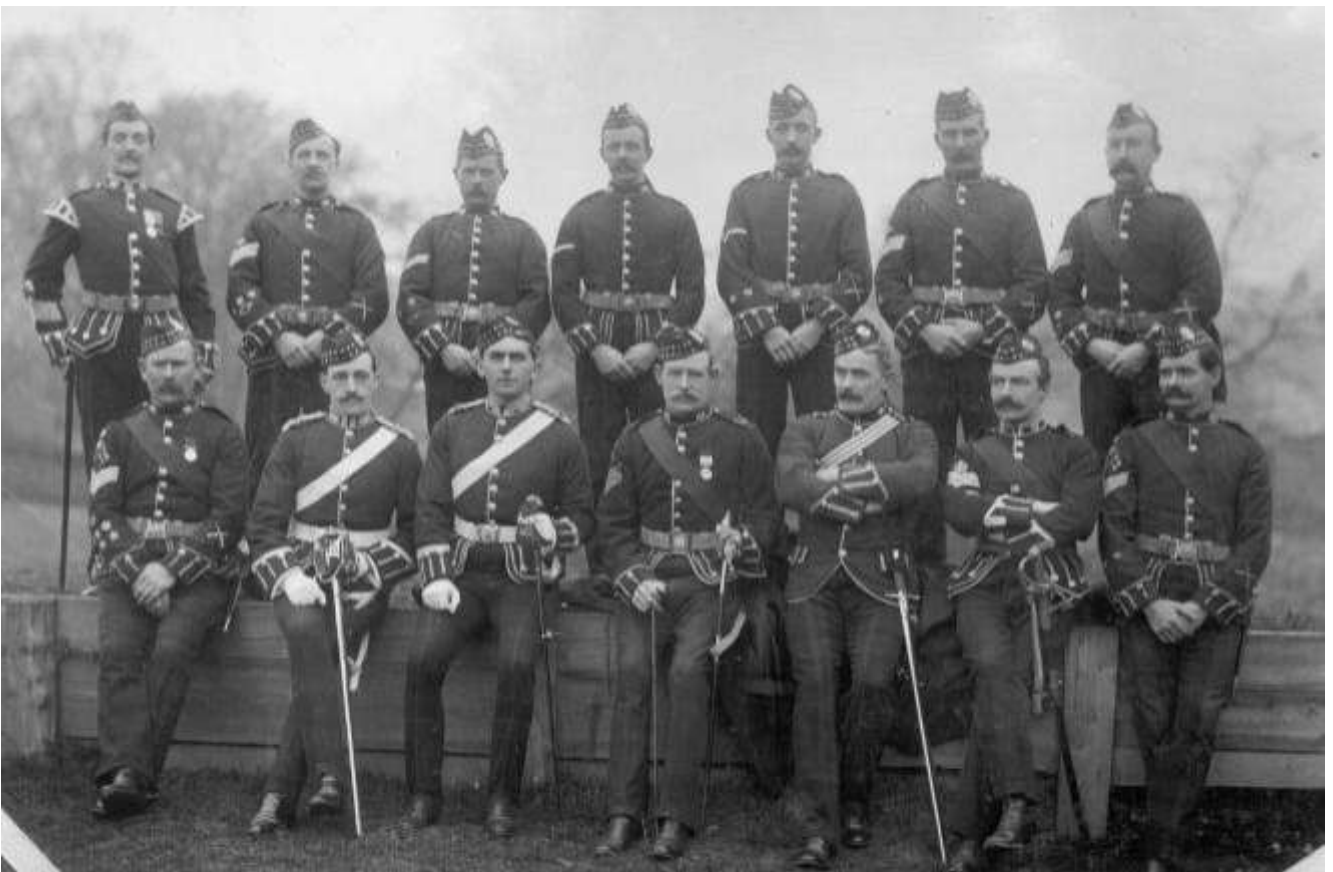
Midlothian was once renowned for its paper-making industry. This photograph shows rag-pickers at Valleyfield paper-mill, c.1905. Valleyfield in Penicuik was the largest of the Midlothian mills.



Gardening staff at Mavisbank house near Loanhead, c.1914. Originally built for the Clerk family of Penicuik, Mavisbank was a private asylum at this time.



Dalkeith High Street was packed with cheering crowds for the visit of King Edward VII and Queen Alexandra in May 1903.



Non-commissioned officers of the 6th Volunteer Battalion the Royal Scots photographed on 31 March 1908, the final day of the Volunteers before they became the Territorial Army. (Black Collection)



The Penicuik Free Gardeners was a friendly society whose main aim was the mutual support and protection of its members. The Gardeners held annual processions which included young girls dressed in white and bearing baskets of flowers who represented the ten virgins of the Bible. (Black Collection)



Roslin Curling Club was founded in 1816 and in 1895 an artificial pond was completed at Roslin, as shown in this photograph from c.1910.

WM William McTaggart Family Archive		
William McTaggart RSA (1835-1910) was a gifted landscape artist. He spent the last 20 years of his life at Dean Park House, Broomieknowe. A collection of McTaggart family papers was gifted to the Bonnyrigg and Lasswade History Society but is held at Local Studies. The papers mainly concern his daughter Betty McTaggart who was an accomplished artist in her own right.		
WM/1-10	Newspaper cuttings of the death of William McTaggart; original sketches, drawings and notebooks by Betty McTaggart; photograph albums, family photographs, reproductions of William McTaggart's paintings	1880-1986

WMC William Marwick Collection		
William Hutton Marwick (1894-1982) was a lecturer in Economic History at the University of Edinburgh, a Quaker and a conscientious objector in the First World War. This collection includes personal material and a large number of pamphlets about politics, peace and religion.		
WMC	Photographs, correspondence, artworks, books, scrapbooks, magazines, writings of WH Marwick, pamphlets on politics, economics and social affairs, publishers' catalogues and booklists, tourist guides and travel leaflets, pamphlets, journals and periodicals	1894-1982

People, Family and Communities small gifts and deposits		
MM/22	Letters, testimonial, list of the Baronets of Nova Scotia (typed transcription) (1625-32), biographical notes	1920-40
MM/25	Ballantyne family, Dalkeith letters and correspondence	1859-1981
MM/84	Photographs and papers about John Noble, chemist, Leith, including information on Leith Bowling Club	1940-1950
MM/92	Exercise book of Alexander Briggs, Newtongrange	1872
MM/101	Papers and photographs about Alexander Paterson Blaikie (1862-1937) and his emigration to Australia	1862-1937
MM/102	Copy of Alexander Smith's (b. 1878 in Loanhead) diary and genealogical information about the Smith family, Loanhead	1900
MM/109	Photographs (3) relating to the Gent family, Beechwood House, Gorebridge, membership cards (2) for the Popular Club, Gorebridge	1910s

Section 3: Land and Estate Records

DKT Burgh of Dalkeith Titles		
These papers record title deeds for Dalkeith properties acquired by the former town council of Dalkeith. These include the names of owners, tenants, and witnesses.		
DKT	Title deeds and papers for Dalkeith properties (1662-1975) including properties in Wicket and West Wynd (1675-1961), White Hart Street (1809-1962), Eskdail Lodge (1806-1958), High Street (1748-1963), South Street (1710-1961), properties (1662-1975), street lighting and electricity board (1904-1950), byelaws (1904-1966), mortgages, bonds and assignations (1928-1952), Jarnac Court redevelopment (1810-1961)	1662-1975

LT Lothian Estate Records		
These papers were collected by James McGill Rae, chamberlain for Newbattle Abbey estate. They are mainly about estate business but include information on Jardinefield (1815), a list of constables at Newbattle (1817), militia matters (1818), a list of household stores (1822), accounts, and receipts.		
LT/1-61	Correspondence on estate matters	1814-1825

Land and Estate small gifts and deposits		
MM/2	Papers (2) in a dispute between Lillias Borthwick and John Borthwick of Cruickston regarding the inheritance of the lands of Overshiels and Hartside	1730
MM/85	Charter of confirmation for the farm of Piothall, Crichton	1807
MM/98	Manuscript relating to the Dalkeith area, dated 18 January 1666: [Transmission] by Sir Alexander Hay of Monkton to Alexander Hay the younger, his son of half the lands of Newtown. Signed by Sir Archibald Primrose Lord Clerk Register of Scotland.	1666
MM/103	Instrument of sasine in favour of Thomas Moffat, flesher, Edinburgh and Alexander Moffat, candlemaker, Dalkeith	1837
MM/120	Papers regarding Ashley Estate, Rathobyres and Rathobank, Ratho	1657-1930
MM/121	Arndale Scotland Ltd writs about properties in High Street, Dalkeith	18th C-20th C
MM/122	Papers regarding Loganbank House, Penicuik	1892-1969

Valuation Rolls		
Valuation Rolls cover the historic counties of Edinburgh and Midlothian, not including the city of Edinburgh. Beginning in 1855, they provide an annual record of landed property and list the name and designation of the proprietor, tenant, occupier, rateable value of the property and, in some cases, a description of the property including its location and boundaries. Unlike the census, valuation rolls do not list all of the residents of a property.		
VR/1 – VR/42	Valuation Roll for the County of Edinburgh	1857-1921
VR/43 – VR/97	Valuation Roll for the County of Midlothian	1921-1989

Section 4: Business and Trade Records

WSS William Somerville and Son Limited		
William Somerville and Son Limited were papermakers at Dalmore mill, Auchendinny.		
WSS/1-6	Pay and wages books (1883-1951), sales ledgers, closing accounts and outturn books (1901-1986), purchase ledgers and books (1912-1967), inventories (1895-1956), cashbooks (1913-1961), daily records (1912-1988)	1883-1988

Business and Trade small gifts and deposits		
MM/6/5	Unidentified general merchant's day book	c.1865
MM/6/6	M&F Cooperative Society, coal merchants, Dalkeith order and delivery book	c.1920s
MM/6/7	John Steele, coal merchant, Dalkeith order and delivery book	c.1920s
MM/46	David Ross, merchant, Poltonhall account to Robert Hunter	1863-1865
MM/62	Penicuik foundry records (photocopies)	1840-1850
MM/80	Report on Newbattle coalfield by John Williamson, Edinburgh	1860
MM/83	Articles, booklets, and photographs about papermaking in Penicuik	1860-1960
MM/90	Hebburn and Edmonstone collieries reports, petitions, and coal sales.	1800-1857
MM/104	Original pamphlets and records concerning Roslin bake-house, including pictures, maps, legal documents, valuation roll excerpts and historical accounts (all photocopies)	1980s
MM/107	Verbatim typescript of the recorded recollections of Mrs Nellie Traill, Penicuik (an edited version published in the book <i>Bondagers</i> (Tuckwell, 2001))	1990s
MM/119	Notes and photographs collected by Ian MacDougall for a book <i>Midlothian at Work</i> (not completed)	1980s

Section 5: Unions, Guilds and Associations

MM/1	Scottish Co-operative Women's Guild, Dalkeith minute books (1918-1948), cashbooks (1926-1946), rules (1951)	1918-1951
MM/4, 28, 81	Records regarding the Society of Hammermen, Dalkeith account book	1764-1817
MM/27	Penicuik Farmers' Society minute book	1794-1869

Section 6: Politics and the State

NC Newbattle Abbey College Campaign Collection		
In the late 1980s, Newbattle Abbey College was threatened with closure. A vigorous and successful campaign was held to keep the College open, which is reflected in this collection of papers.		
NC/1-22	Poster, announcements, press releases, information and briefing papers, symposium and formal papers, adult education papers, campaign correspondence, Communicado theatre production, papers relating to courses, correspondence, minutes, memoranda, reports, and newspaper cuttings	1987-1989

ER Electoral and Voters' Rolls		
ER/1-51	County of Midlothian 1902-3; Parliamentary County of Midlothian and Peebles (Peebles & Southern) 1920, 1921; Parliamentary County of Midlothian and Peebles Voters Roll 1929, 1930; Parliamentary County of Midlothian and Peebles Voters Roll (Northern) and (Peebles & Southern) 1931; Parliamentary County of Midlothian and Peebles Voters Roll 1937; Parliamentary County of Midlothian and Peebles 1945, 1946, 1948; County of Midlothian Register of Electors 1958, 1960-67, 1974; Lothian Region Midlothian District Register of Electors 1975-77, 1979, 1980, 1984-1995; Midlothian Council Register of Electors 1996-	1902-

Politics and the State small gifts and deposits		
MM/30	Castlelaw Range public enquiry papers	1969-1979

Section 7: Leisure and Recreation

MM/17	Dalkeith and District Arts Guild minutes, exhibitions, invitations, and programmes	1975-1984
MM/18	Loanhead Station Ironworks Choir posters, notices and programmes	1928-1931
MM/86	Dalkeith Rugby Football Club centenary papers, programmes, and menus	1998
MM/89	Bonnyrigg and District Scottish Country Dance Club papers, cashbooks, and sheet music	1950-1975
MM/111	Carnethy Canoe Club papers	1978-1995
MM/115	Bonnyrigg and Lasswade Civic Week programmes	1953-1973
MM/116	<i>Glenrath Review</i> magazine of the 19th Midlothian Boy Scouts (16 issues)	1932-1939
MM/117	14th Midlothian (Bonnyrigg) Boy Scouts records, including the World Jamboree, Netherlands (1937)	1937

Section 8: Church and Philanthropy

MM/5/1	Fraser Hogg trust for the poor of Dalkeith receipt book	1901-1922
MM/5/2	Henry Ainslie trust for the deserving of Dalkeith receipt book	1883-1905
MM/64	United Associate Congregation, Lasswade treasurer's cashbook (1833), Lasswade Parish Church roll of communicants (1875) and allocation of sittings in church (1886)	1833-1886
MM/114	Lothian Presbytery Inductions (1866-82), leases between Thomas Clapperton and James Whittie (1868), reports of the East United Presbyterian Congregation, Dalkeith (1869-74), Stobhill Parish Coronation Celebrations Order of Service (1911), Foundation Stone Service for Dalkeith Baptist Church (1980), Handbook of the Presbytery of Lothian (1988-89)	1866-1989

Glossary

Burgh	a town with special privileges conferred by charter and with its own corporation
Chamberlain	the factor or business agent of an estate or burgh
Chartulary	a register book
Court Book	a book containing records of a court of justice
Dean of Guild Court	a court with jurisdiction over the buildings of a burgh
Estate papers	a collection of papers concerning the running of an estate
Feuar	a person who has exclusive use of a piece of land in return for payment to a feudal superior
Guild	an association of common interests, providing mutual support and protection
Incorporation	an association of tradesmen belonging to the same craft
Lair	the ground for a grave in a burying place
Letter book	copies of letters kept together in a bound book
Licensing Court	a court that grants licences to sell alcohol
Mortifications	the bequests of a charitable institution
Parochial Board	an elected body set up by each parish after 1845 and responsible for the Poor Law provisions and much of the parish administration
Sasine	the act or procedure of giving possession of feudal property
School Board	an elected body set up in parishes to provide universal elementary education
Trustees	people entrusted the management of property committed in trust for the benefit of others

Index

DESCRIPTION	REF CODE	PAGE	DESCRIPTION	REF CODE	PAGE
Ainslie, Henry, Trust	MM/5	19	Carrington Schools	SB/2, SLB	6-7
Art	AFC, WM, MM/17	9, 15, 18	Castlelaw Public Enquiry	MM/30	18
Ashley Estate, Ratho	MM/120	16	Cemeteries	MC	8
Auchendinny	WSS	17	Choirs	MM/18	18
Ballantyne Family, Dalkeith	MM/25	15	Churchyards	MC	8
Baronets of Nova Scotia	MM/22	15	Cinemas	MCC/33	5
Baden, Eric	EBB	9	Civic Weeks	MM/115	18
Beechwood House, Gorebridge	MM/109	15	Coal & Coal Mining	MM/90	17
Bequests	SB/4, MM/5/1-2	6, 19	Cockpen	AFC	9
Birth Control	WMC	15	Cockpen Parish Council	MCC/21	5
Black Family, Penicuik	BLA	9	Cockpen Schools	SB/1-3, SLB	6-7
Blaikie, Alexander Paterson	MM/101	15	Communicado Theatre	NC	18
Bondagers	MM/107	17	Conscientious Objectors	WMC	15
Bonnyrigg & District Scottish Country Dance Club	MM/89	18	Constables	LT	16
Bonnyrigg & Lasswade	EBB	9	Courts	MBC/12	2
Bonnyrigg & Lasswade Burgh Council	MBC/1-4	2	Cousland School	SLB	7
Bonnyrigg & Lasswade Civic Week	MM/115	18	Cowan Family, Penicuik	BLA	9
Bonnyrigg & Lasswade Dean of Guild Court	MBC/3/1-3	2	Cowan Institute Literary Society	BLA	9
Bonnyrigg & Lasswade Libraries	ML/2-3	8	Cranston Churchyard	MC	8
Bonnyrigg & Lasswade Commissioners	MBC/1	2	Cranston Parochial Board	MCC/22	5
Bonnyrigg Schools	SLB	7	Cranston Schools	SB/1-3, SLB	6-7
Borthwick Churchyard	MC	8	Crichton Cemetery	MC	8
Borthwick Estate	MM/2	16	Crichton Schools	SB/1-2, SLB	6-7
Borthwick, Lillias & John	MM/2	16	Dalkeith	LUC, DKT, MM/121	10, 16
Borthwick Parochial Board	MCC/19	5	Dalkeith & District Arts Guild	MM/17	18
Borthwick Schools	SB/1-2, SLB	6-7	Dalkeith Baptist Church	MM/114	19
Bowling	MM/84	15	Dalkeith Burgh Court	MBC/12	2
Braehead Water District	MCC/4	4	Dalkeith Churches	MM/114	19
Briggs, Alexander, Newtongrange	MM/92	15	Dalkeith Churchyard & Cemeteries	MC	8
Broomieknowe	WM	15	Dalkeith Commissioners	MBC/5	2
Burghs	MBC	2-3	Dalkeith Dean of Guild Court	MBC/7/1-2	2
Burials	MC	8	Dalkeith High School	ME/7	7
Calder District Council	MCC/4	4	Dalkeith Juvenile Court	MBC/12	2
Canoeing	MM/111	18	Dalkeith Licensing Court	MBC/8	2
Carnethy Canoe Club	MM/111	18	Dalkeith Hammermen Guild	MM/4	17
Carrington Churchyard	MC	8	Dalkeith Parochial Board	MBC/11	2
Carrington Parochial Board	MCC/20	5	Dalkeith Police Commissioners	MBC/9/1-2	2
			Dalkeith Rugby Football Club	MM/86	18
			Dalkeith Schools	SB/1-2, SLB	6-7
			Dalkeith Sewerage Works	MBC/14	2
			Dalkeith Trustees	MBC/5	2
			Dalmore Papermill	WSS, MM/83	17
			Dancing	MM/89	18

DESCRIPTION	REF CODE	PAGE
Dean Park House, Broomieknowe	WM	15
Doctors	LUC	10
Don Wauchope Family	WE	10
Duncan Family	FKD	10
East United Presbyterian Church, Dalkeith	MM/114	19
Easthouses School	SLB	7
Edgefield Water District	MCC/4	4
Edmonstone	WE	10
Edmonstone Brickworks	WE	10
Edmonstone Colliery	MM/90	17
Edmonstone House	WE	10
Education	ME, AFC	6-7, 9
Education Bequests	SB	6
Education Mortifications	SB	6
Education Trusts	SB	6
Elections	EBB, ER	9, 18
Electoral Rolls	ER	18
Emigration	MM/101	15
Eskdaill Lodging House	DKT	16
Fala and Soutra Cemetery	MC	8
Fala and Soutra Schools	SB/2-3, SLB	6-7
Farming	MM/27	17
First World War	BLA	9
Firth Estate	FKD	10
Fraser, Andrew	AFC	9
Free Gardeners Lodge	BLA	9
Gala Water District Council	MCC/4, 5-9	4
Gavieside School	SB/3	6
Gent Family, Gorebridge	MM/109	15
Glencorse	BLA	9
Glencorse Parochial Board	MCC/23	5
Glencorse Schools	SB/1-3, SLB	6-7
Glenrath Review (Scouts)	MM/116	18
Gorebridge Library	ML	8
Gorebridge Schools	SLB	6-7
Gray, James, Bursary	SB/4	6
Graves	MC	8
Guilds	MM/4, 28, 81	17
Hammermen, Incorporation of, Dalkeith	MM/4, 28, 81	17
Hartside	MM/2	16
Harvieston Cemetery	MC	8
Hawthornden Cemetery	MC	8
Hay, Sir Alexander of Monkton	MM/98	16
Hebburn Colliery	MM/90	17
Heriot Parish Council	MCC/6/1-2	4

DESCRIPTION	REF CODE	PAGE
Heriot School Board	SB/5	6
Herkes, Peter, Trust	SB/4	6
Hogg, Fraser, Trust	MM/5	19
Housing	MBC/10	2
House to House Collections	MM/32	5
Howgate Schools	SLB	6-7
Inglis of Cramond	WE	10
Inverlochry	WE	10
Jardinefield	LT	16
Jarnac Court, Dalkeith	DKT	16
Johnston Bequest	SB/4	6
Justices of the Peace	MCC	4
Kinnaird Fund	SB/4	6
Lady Gibson Bequest	SB/4	6
Lasswade Burgh records	MBC/16/1-3	2
Lasswade Cemetery & Churchyard	MC, EBB	8-9
Lasswade Churches	MM/64	19
Lasswade District Council	MCC/9-10	4
Lasswade Parish Church	MM/64	19
Lasswade Parochial Board	MCC/24	5
Lasswade Police Commissioners	MBC/16/1-3	2
Lasswade Schools	SB/1-3, SLB	6-7
Leith Bowling Club	MM/84	15
Libraries	ML	8
Licensing Court	MCC/16	5
Loanhead Burgh Records	MBC/17	3
Loanhead Chartularies	MBC/24	3
Loanhead Cemetery	MC	8
Loanhead Dean of Guild Court	MBC/20	3
Loanhead Police Commissioners	MBC/18/1	3
Loanhead and Polton Nursing Association	MBC/19/1-6	3
Loanhead Schools	SLB	6-7
Loanhead Station Ironworks Choir	MM/18	18
Loanhead Subscription Library	ML	8
Loanhead Water Association	MBC/23/1-8	3
Loanstone Water District	MCC/4	4
Loganbank House, Penicuik	MM/122	16
Lothian Estate	LT	16
Lothian Presbytery	MM/114	19
Lucas Family, Dalkeith	LUC	10
MacDougall, Ian	MM/107, 119	17
Magdalene Bridge, Musselburgh	WE	10

DESCRIPTION	REF CODE	PAGE
Maps	AFC	9
Marwick, William	WMC	15
Maternity and Child Welfare	MCC	4
McTaggart Family, Bonnyrigg	WM	15
McTaggart, William, Artist	WM	15
Medicine	LUC	10
M&F Co-operative Society, Dalkeith	MM/6	17
Midlothian County Council	MCC	4-5
Midlothian County Council Licensing Court	MCC/16/1-2	5
Midlothian Poetry Competition	ML	8
Militia	LT	16
Mining	MM/80	17
Moffat, Alexander, Candle-maker, Dalkeith	MM/103	16
Moffat, Thomas, Flesher, Edinburgh	MM/103	16
Moodie's Mortification	SB/4	6
Moredun	WE	10
Newbattle Abbey	LT, NC	16, 18
Newbattle Cemeteries	MC	8
Newbattle Coalfield	MM/80	17
Newbattle District Council	MCC/12-13	4
Newbattle Estate	LT	16
Newbattle Parochial Board	MCC/27	5
Newbattle Schools	SB/1-2, SLB	6-7
Newton Cemetery	MC	8
Newton House	WE	10
Newton School	SB/1-2	6
Newton School Board	SB/5	6
Newtongrange & Easthouses Lighting	MCC/4	4
Newtongrange School	SLB	7
Niddrie Burn	WE	10
Nine-Mile-Burn School	SB/2, SLB	6-7
Old Craighall School	SLB	7
Old Woodhouselee	FKD	10
Oxendene, Eskbank	LUC	10
Pacifism	WMC	15
Papermaking	BLA, WSS, MM/83	9, 17
Pathhead Lighting District	MCC/4	4
Pathhead Schools	SLB	7
Penicuik	BLA	9
Penicuik Burgh	MBC/25-6	3
Penicuik District Council	MCC/14/1-3	5

DESCRIPTION	REF CODE	PAGE
Penicuik Farmers' Society	MM/27	17
Penicuik Foundry	MM/62	17
Penicuik Parish Church	BLA	9
Penicuik Parochial Board	MCC/28	5
Penicuik Police Commissioners	MBC/25	3
Penicuik-Roslin Railway	FKD	10
Penicuik Schools	SB/1-2, SLB	6-7
Pentland Schools	SLB	7
Piothall Farm, Crichton	MM/85	16
Poetry	ML/9	8
Police	MCC/4	4
Politics	EBB, WMC, NC	9, 15, 18
Pomathorn Mills	MM/83	17
Poor Relief	MCC/1, MM5	4, 19
Popular Club, Gorebridge	MM/109	15
Presbytery of Lothian	MM/114	19
Prisoners of War, French	BLA	9
Public Refreshment	MBC/15	2
Quakers	WMC	15
Railways	FKD, WE	10
Rae, James McGill	LT	16
Roads	MCC	4
Roslin Bake-house	MM/104	17
Roslin Cemeteries	MC	8
Roslin School	SB/3, SLB	6-7
Roslin Water District	MCC/4	4
Ross, David, Poltonhall	MM/46	17
Rugby	MM/86	18
Sanatorium	MCC/4	4
School Admission Registers	SB/3	6
School Boards	SB	6
Schools	ME, SLB, SB	6-7
Scottish Co-operative Women's Guild, Dalkeith	MM/1	17
Scouts	AFC, MM/116	9, 18
Sewerage	MBC/14	2
Short Stories	ML	8
Smith, Charles, Mortification	SB/4	6
Smith Family, Loanhead	MM/102	15
Society of Friends	WMC	15
Somerville, William & Son, Papermakers, Penicuik	WSS	17
St Matthew's School, Rosewell	SB/3, SLB	6-7
Steam-rolling	MCC/9	4

DESCRIPTION	REF CODE	PAGE
Steele, John, Coal Merchant	MM/6	17
Stephenson Bequest	SB/4	6
Stobhill School	SB/1-2	6
Stobhill School Board	SB/5	6
Suffrage	LUC	10
Swimming Pool, Bonnyrigg & Lasswade	MBC/2	2
Temple Parochial Board	MCC/30	5
Temple School	SB/2-3, SLB	6-7
Theatre	NC	18
Thistle Lodge of Free Gardeners	BLA	9
Toxside School	SB/3	6
Traill, Nellie, Bondager, Penicuik	MM/107	17

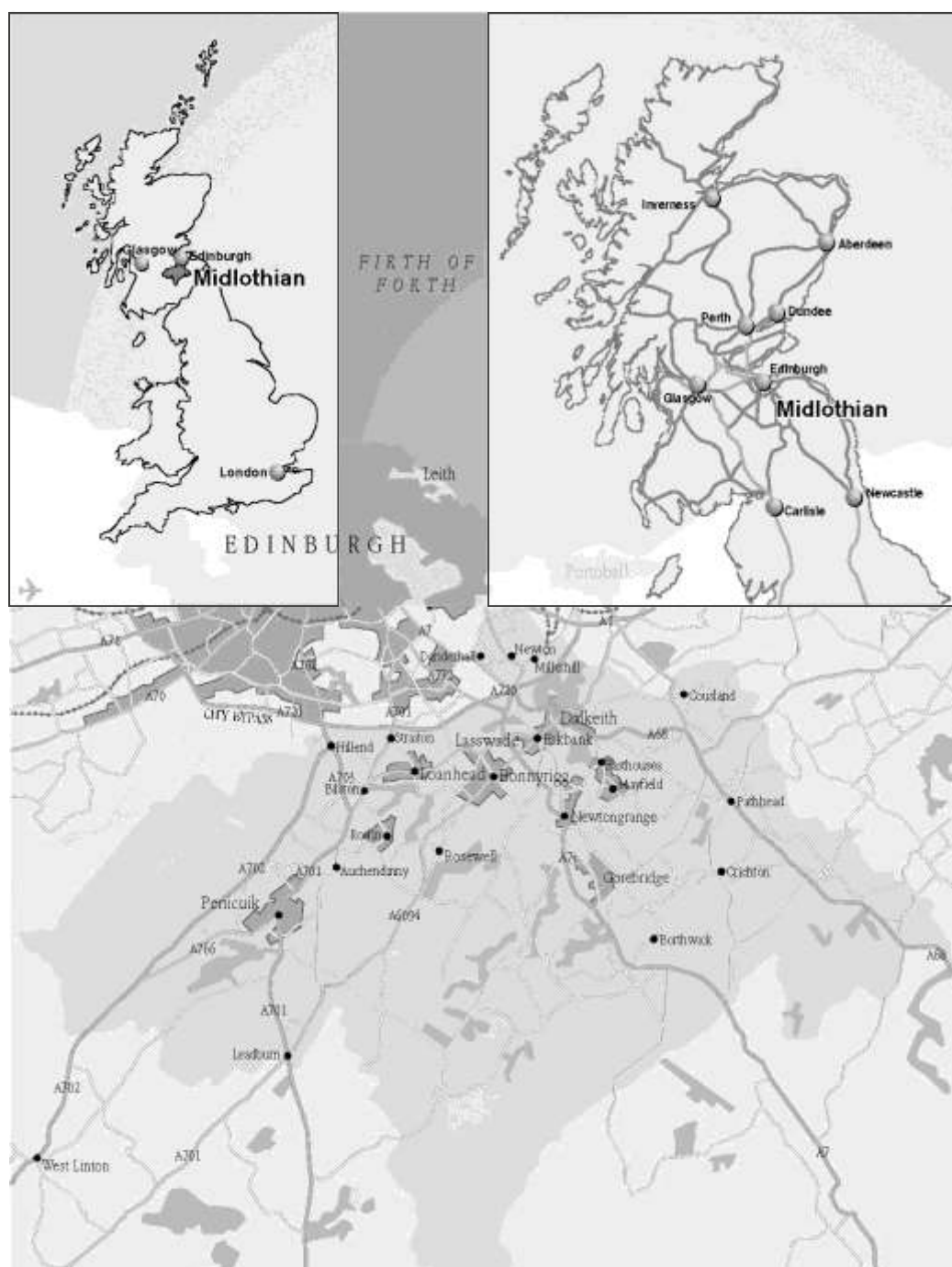
DESCRIPTION	REF CODE	PAGE
Travel	LUC	10
Tweedie's Trust	SB/4	6
United Associate Congregation, Lasswade	MM/64	19
Valleyfield Papermill	BLA, MM/83	9, 17
Valuation Rolls	VR	16
Venereal Diseases	MCC/4	4
Volunteers	BLA	9
Voters' Rolls	ER	18
Wauchope Family of Edmonstone	WE	10
Whitie, James, Engineer, Gorebridge	MM/114	19
Woodhouselee	FKD	10

The County of Midlothian

The historical county of Midlothian, or 'Edinburgh-shire' as it was often known, once occupied a much larger area than today. It stretched from West Calder in the west, down to Stow in the south, and over to Inveresk in the east, roughly a horseshoe of land encircling the city of Edinburgh.

This means that Midlothian Archives includes records about places that are now in different local authority areas, such as West or East Lothian, the Scottish Borders or the City of Edinburgh.

The boundaries of Midlothian have been changed on several occasions in the past, the most recent being local government reorganisation in 1996 which established the existing council boundary.



Midlothian Archives and Local Studies
Library Headquarters
2 Clerk Street
Loanhead
Midlothian
EH20 9DR
Tel 0131 271 3976
Email local.studies@midlothian.gov.uk
www.midlothian.gov.uk/archives

13 Sept 1873 -
inst at ten
There apper
2 and of the
previously -
English Gram

Opening Hours	
Monday	9:00am - 5:00pm & 6:00 - 8:00pm
Tuesday	9:00am - 5:00pm
Wednesday	9:00am - 5:00pm
Thursday	9:00am - 5:00pm
Friday	9:00am - 3:45pm



Midlothian  our library