

Roslin Glen Country Park

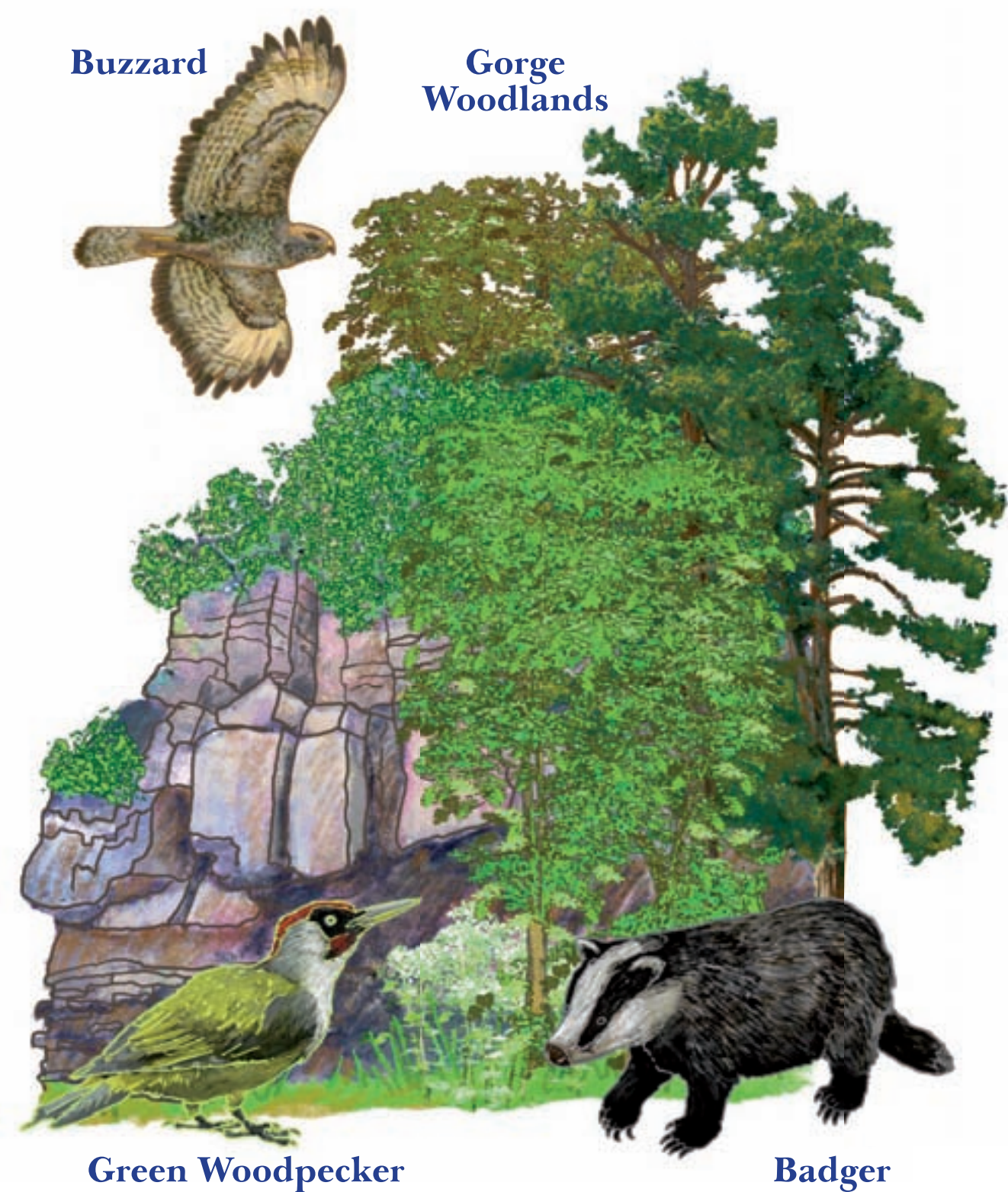


Meadows and Grasslands

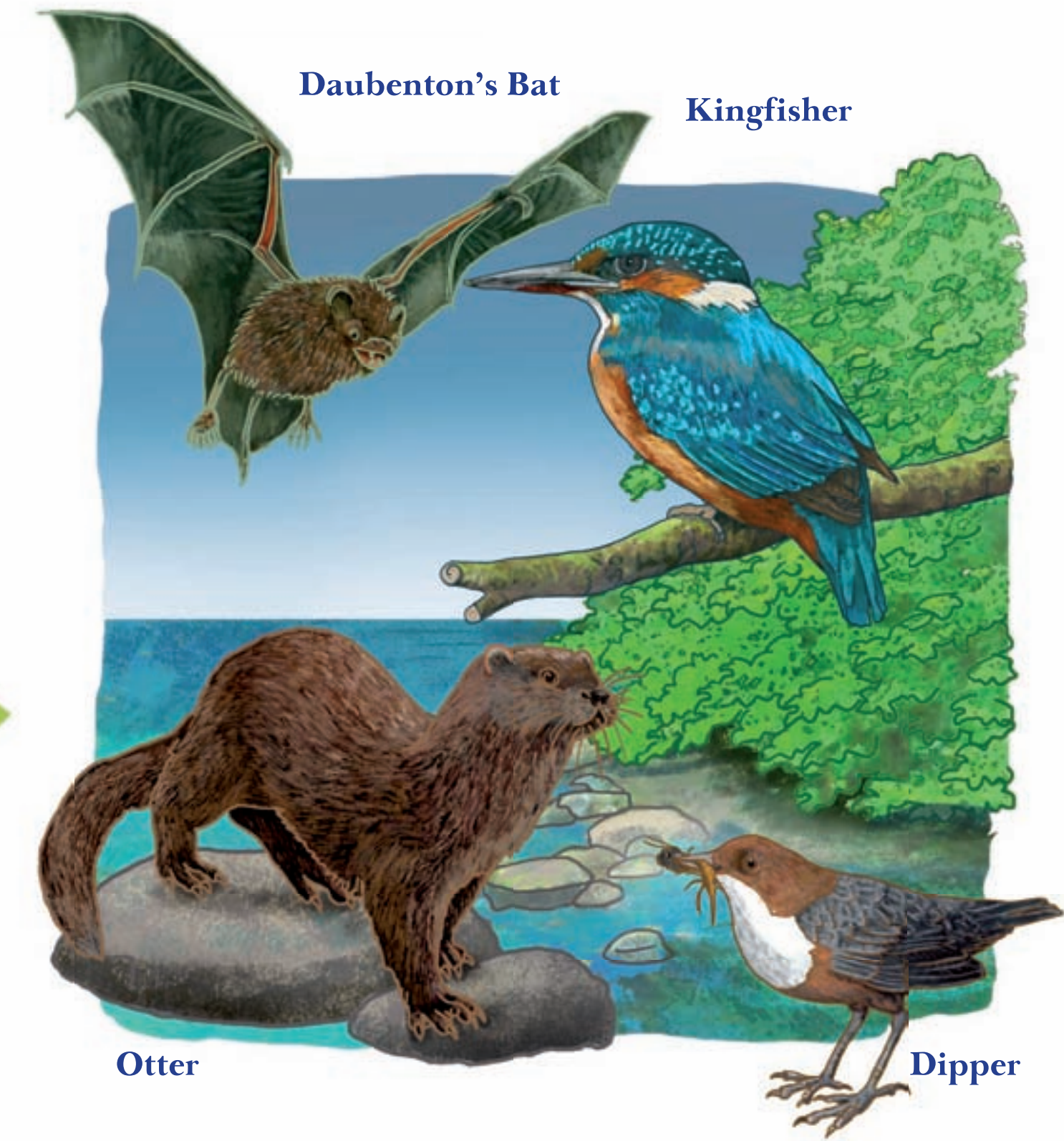
Across the UK many of these habitats are being lost. But here at Roslin management by Midlothian Ranger Service has maintained a diverse range of grassland and meadow types. The wildlife is thriving; Bumble Bees and Butterflies feed on the nectar rich flowers and Barn Owls hunt their prey such as Field Voles amongst the tall grasses and Foxgloves.

Gorge Woodlands

Midlothian is covered in 270 hectares of Gorge Woodland. This ancient semi-natural habitat is rich in biodiversity and the upland Oak-Birch woodlands found in the Country Park support a wide variety of plants and animals. Green Woodpeckers breed within the tree canopy; Buzzards soar above the steep sandstone cliffs and Badgers forage amongst the Bluebell covered woodland floor.



Welcome to Roslin Glen Country Park, a place with a rich industrial and cultural heritage. Once home to Scotland's largest gunpowder mill, it is now a spectacular location to explore the natural environment of the Esk Valley with its diverse range of habitats and associated wildlife.

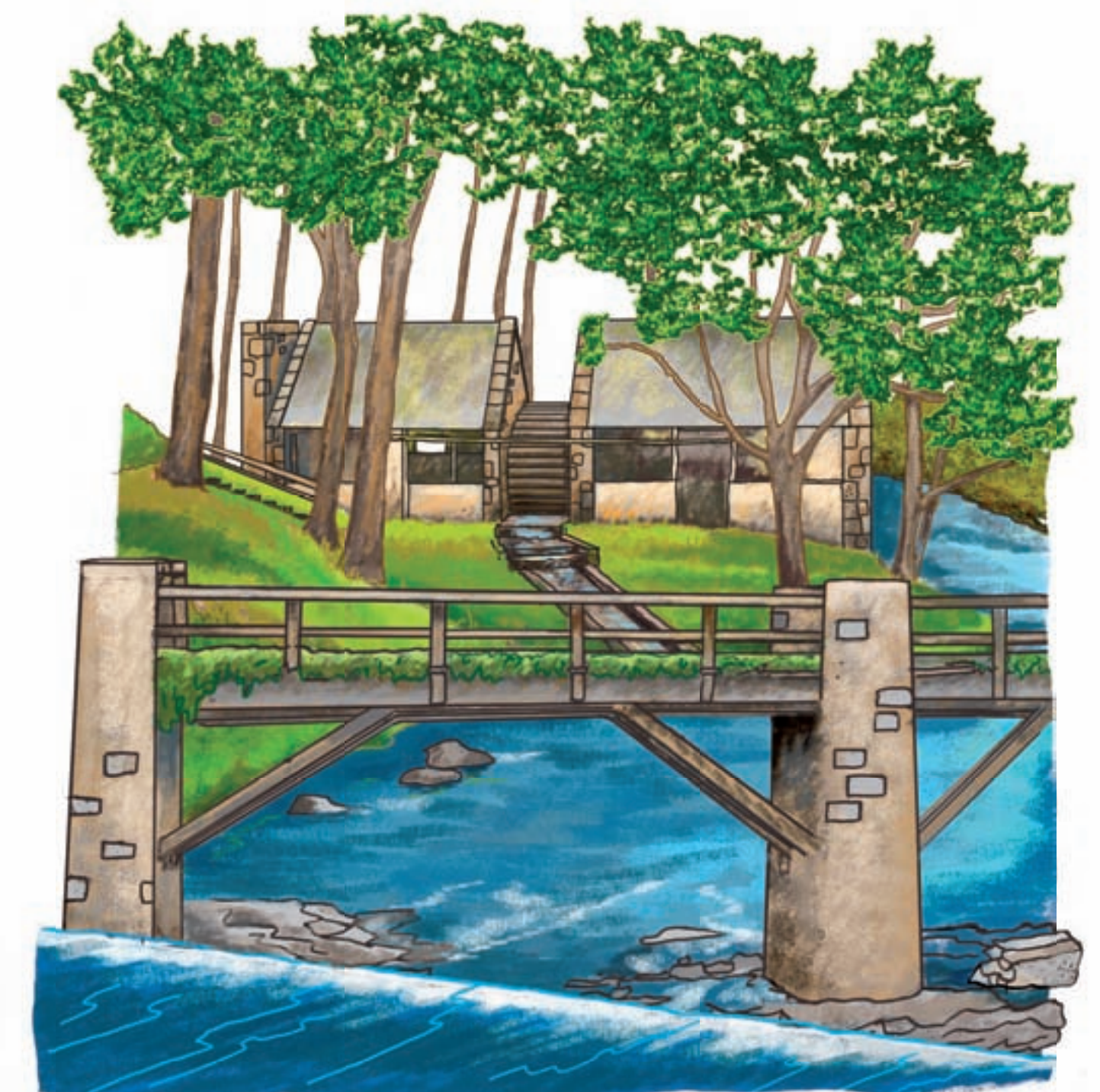


The River North Esk

With its source in the Pentlands Hills, the river meanders through the Esk Valley. At one time polluted by the mills, the wildlife has now returned. Dippers can be seen bobbing up and down and diving for aquatic invertebrates. Kingfishers perch above deep pools and the shy Otter has made its home along the river banks.

Industrial Heritage

The Gunpowder Mills of Roslin Glen played a vital role in Midlothian's industrial past. For over 150 years the manufactured gunpowder and explosives from mills was used in the mining and quarrying industries. Roslin also supplied munitions for several wars including the Napoleonic, Crimea and the First and Second World Wars.



Water wheel and bridge at weir