

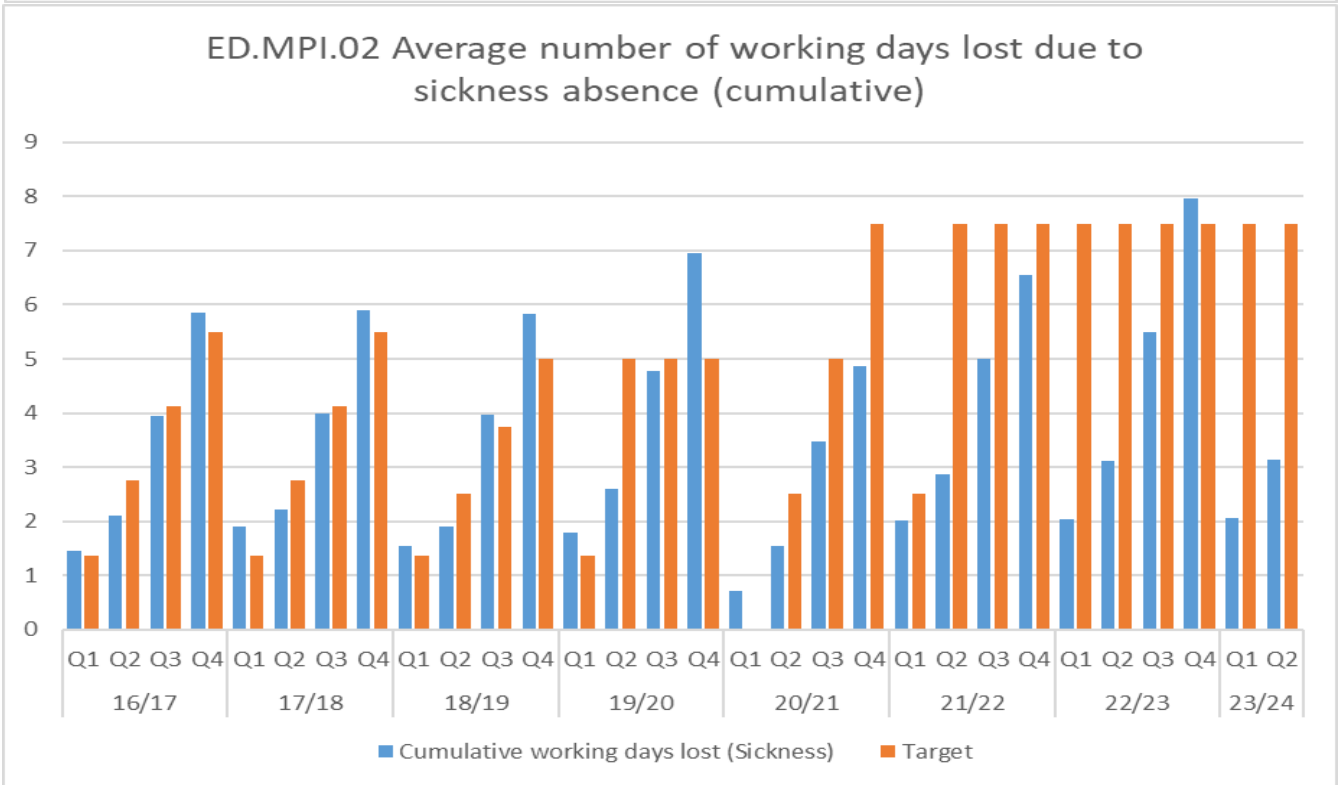
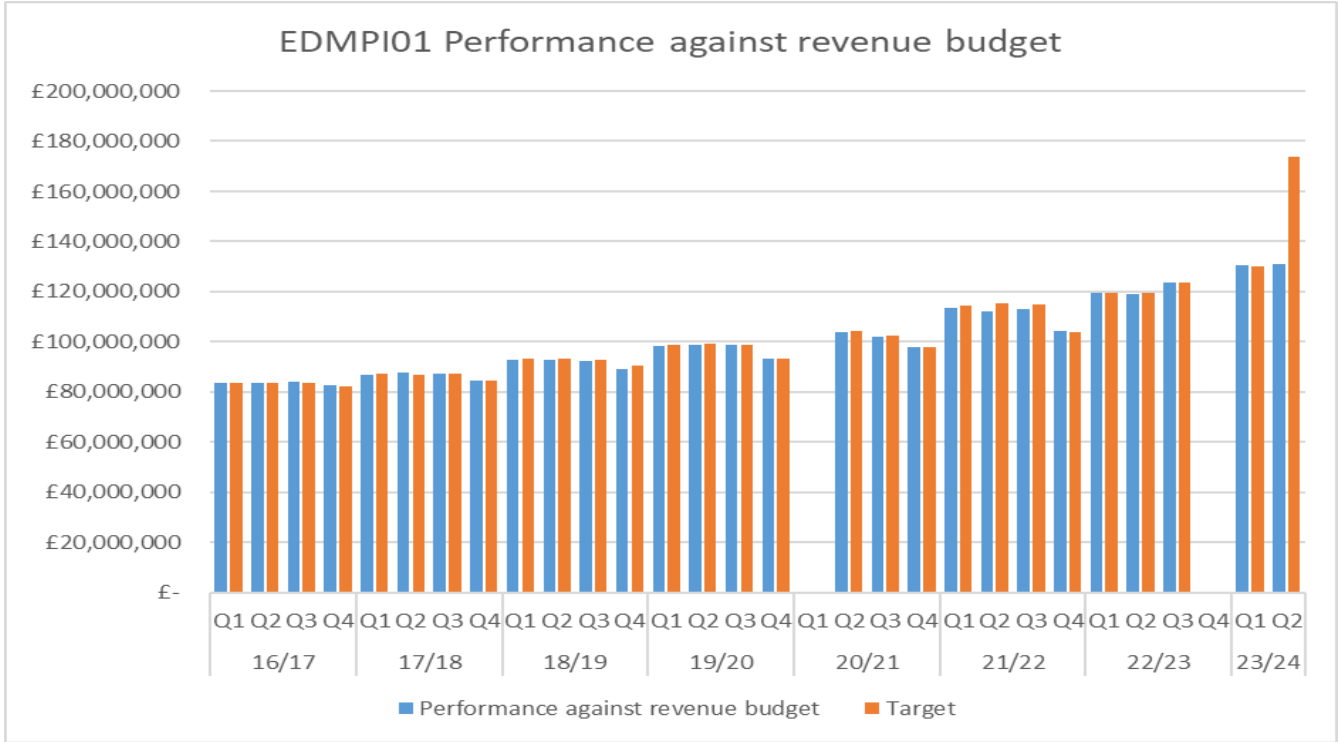
# Education Performance Report 2023/24

## Quarter 2

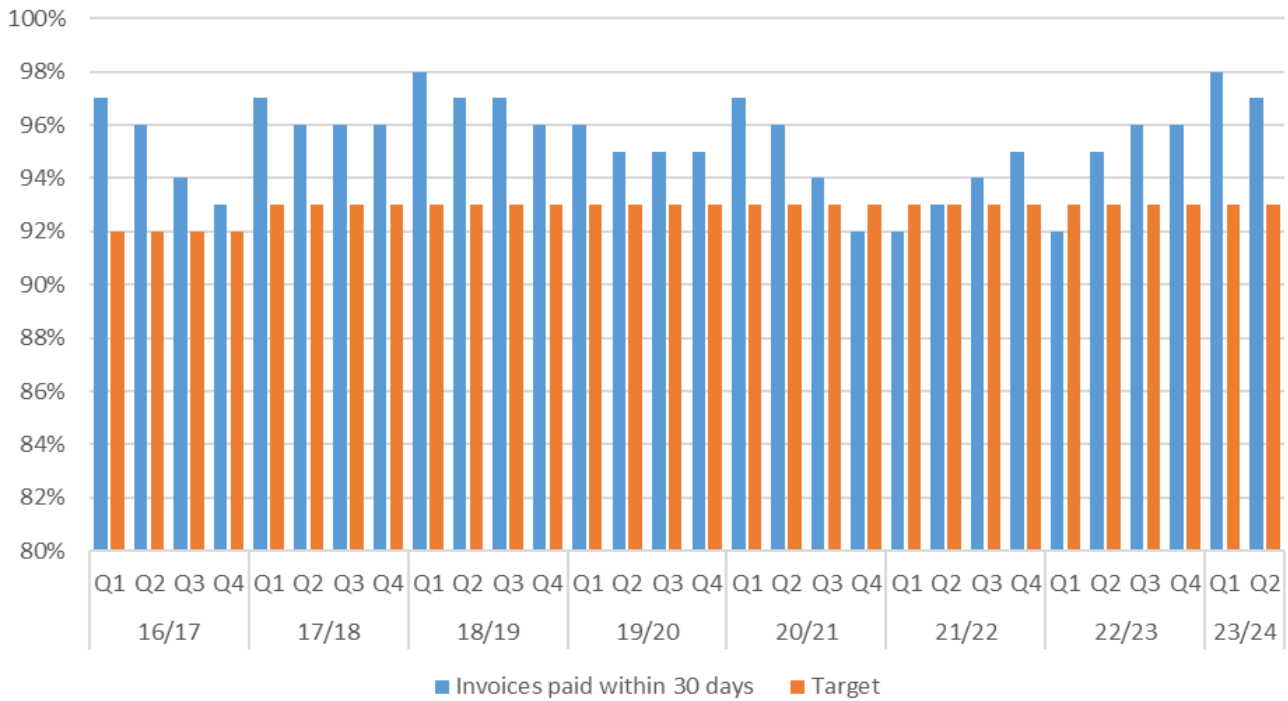


### 01. Progress in delivery of strategic outcomes

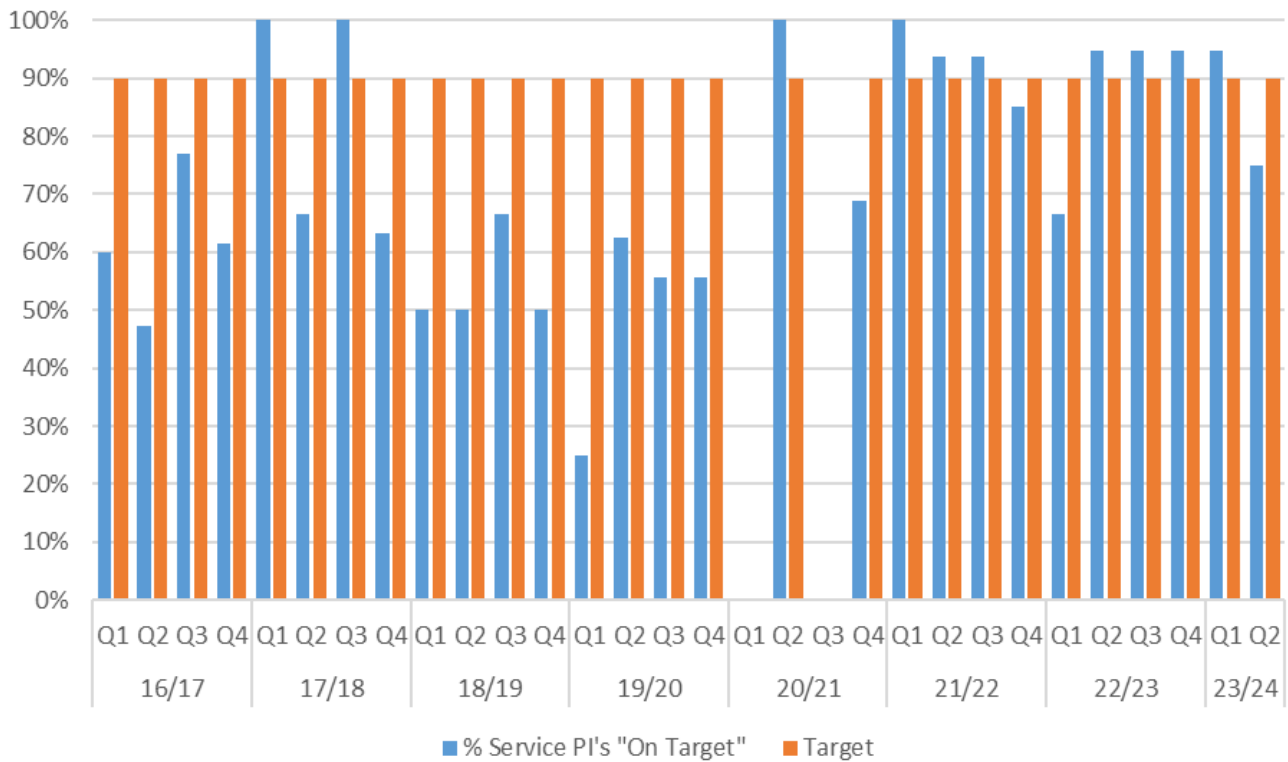
Q2 22/23:



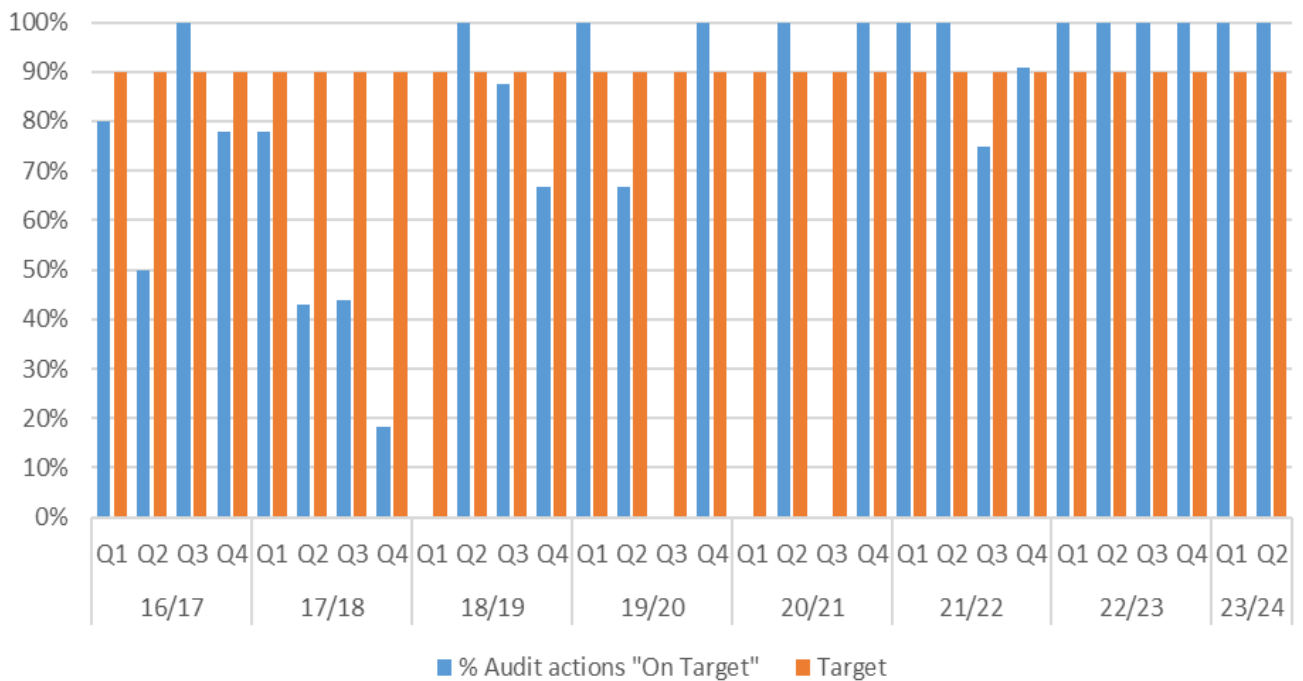
ED.MPI.04 % of invoices paid within 30 days of invoice receipt (cumulative)



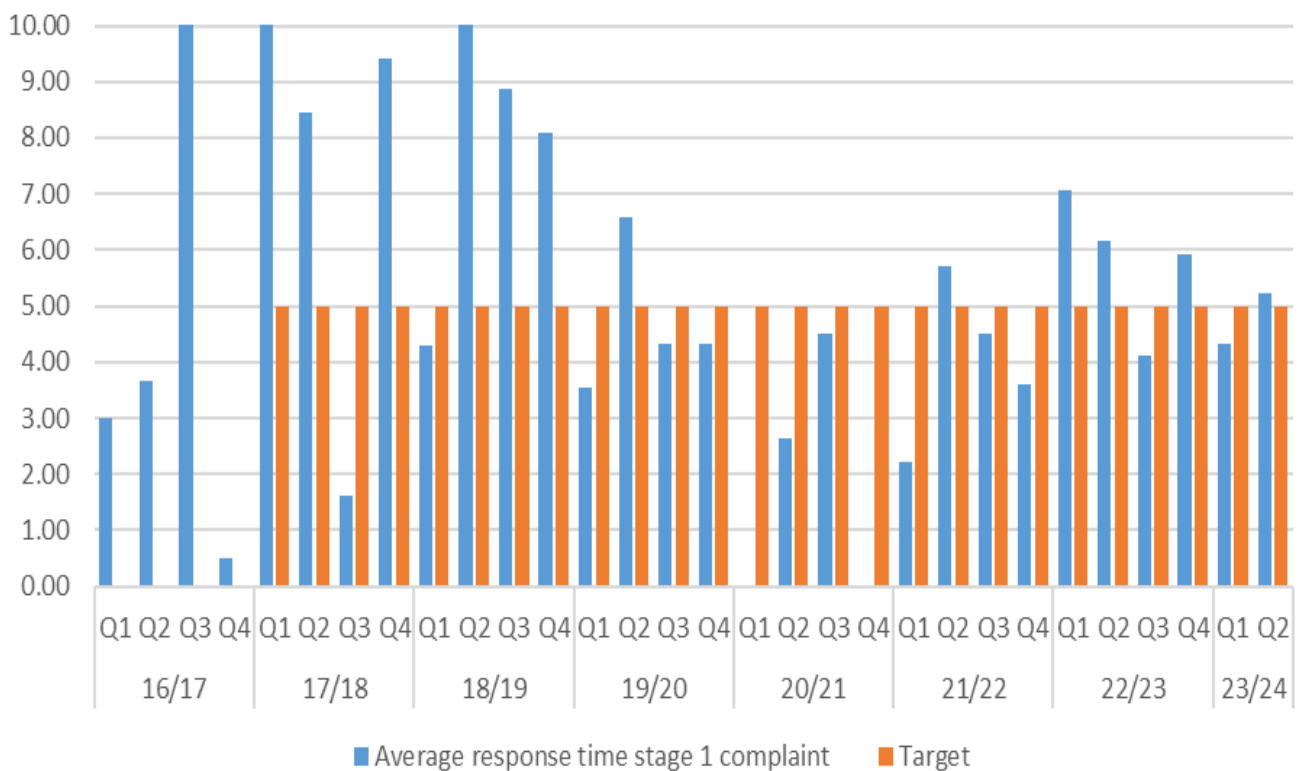
ED.MPI.05 % of Service PIs that are on target/ have reached their target. (does not include Corporate PIs)



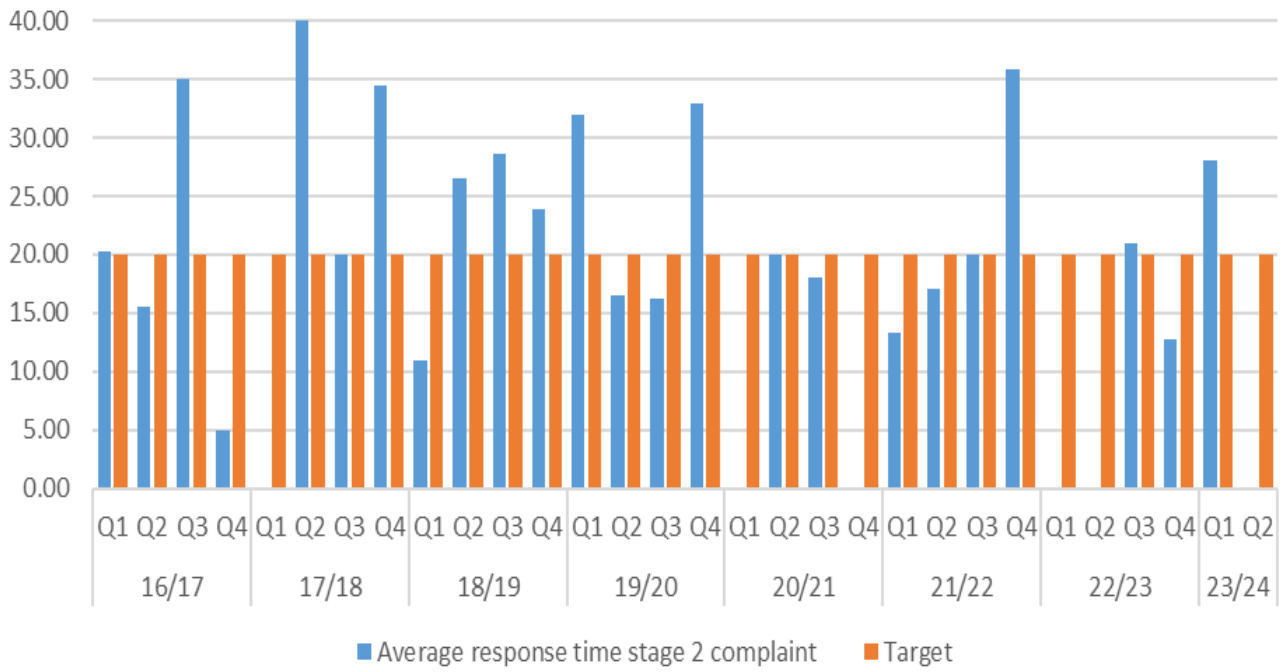
ED.MPI.07 % of internal/external audit actions progressing on target or complete this quarter



ED.SPSO.04.1 Average time in working days to respond to complaints at stage 1



### ED.SPSO.04.2 Average time in working days to respond to complaints at stage 2



## 02. Successes and Achievements

### Q2 23/24: Raising attainment

#### Attainment targets Stretch Aims Primary and Secondary

	2017	2018	2019	2021	2022	2023	Ave. (17-19)	Target
Pr Literacy	62.25%	74.68%	72.76%	65.75%	68.20%	71.56%	68.86%	71.5%
Pr Numeracy	71.14%	79.63%	77.77%	72.80%	76.05%	76.83%	75.34%	72.0%
S3 Literacy	76.73%	80.25%	86.80%		80.70%	85.12%	69.90%	88.0%
S3 Numeracy	88.81%	87.68%	89.56%		88.50%	91.02%	88.68%	90.5%

The 2022/23 academic year was the first year of the Scottish Attainment Challenge under its refreshed model with a requirement for local authorities to set ambitious, achievable stretch aims for progress in overall attainment and towards closing the poverty-related attainment gap in the 2022/23 academic year.

Against our targets set for 2023/23 there was above average performance in primary literacy and numeracy and S3 numeracy.

Our performance against our stretch aim targets and national performance will be reported in due course on publication of the national figures.

Improvement in literacy and numeracy attainment has been achieved through the introduction of Midlothian Literacy and Numeracy frameworks to support effective learning, teaching and assessment and a shared understanding of standards and expectations. Our Education Recovery Team also provide direct support using improved data to identify groups of learners who require additional support to address gaps in learning. Where schools benefitted from targeted recovery intervention at P4, schools exceeded their stretch aims by 9% in Writing and by 1% in Numeracy.

Data dashboards have been developed and in place to support Headteachers and staff to monitor children's progress and put in place intervention strategies to support children to be on track with their learning

The Annual Participation Measure reports on the economic and employment activity of 16 to 19-year-olds in Scotland and is the information source for one of the Scottish Government's National Performance indicators. The most recent data published in 2023, showed that in Midlothian 95.4% young people were participating in education, training or employment. This is the highest figure ever recorded and is above the national rate of 94.3%.

#### **Equipped for learning**

The *Equipped for Learning Strategy* is in Phase 2. The focus of this phase is to ensure deployed devices are used to positively impact learning, teaching and assessment. The investment in staff development as well as accessibility tools for learners are beginning to transform classroom practice. Recent school inspection reports have highlighted the digital skills of learners and the effective use of accessibility tools to support learners. Nationally, Equipped for Learning is gaining interest and the project recently won the Learning Spaces Award for Transforming Teaching, Learning & Curriculum.

#### **Included Engaged and Involved**

Two Child Poverty Directorate Conferences have taken place, cost of the school day and children's rights good practice shared and feedback informing child poverty action plan.

Revised attendance policy and strategy in place to tackle non-attendance and reduce exclusions. The newly developed data dashboard has enabled analysis of attendance patterns across schools on a weekly basis with data broken down by school, stage and characteristics including ASN and SIMD. This has enabled more insight into those at risk of non-attendance and preventative plans to be developed in schools. The attendance procedures have been reviewed and refreshed in line with UNCRC and the Promise promoting attendance as a social and cultural right and promoting effective pathways and partnerships to re-engage children and young people in education.

The Care Experienced Children and Young People continues to focus on improving outcomes for those whose attendance is less than 75%. Three children & families practitioners are working with 32 children who are care experienced. Their work centres around reducing anxiety, establishing and maintaining routines and improving links between home and school. Recent evaluations highlighted that building trusting relationships was the key to success.

Scrutiny of all PEF plans has taken place to ensure funding is targeted at those who will benefit from additional support and close the poverty related attainment gap.

A whole staff teacher conference was held at the start of the academic session. Staff attended workshop sessions on children's rights, trauma informed practice and digital learning. All Support for Learning Staff have been trained in Inclusive Classrooms, had equipped for learning digital update and new Midlothian Learning Plans to support their work.

Nurture Leads from schools and services across Midlothian have worked together on developing a common framework for relational, trauma-informed practice. Professional learning sessions on relational, trauma-informed practice have taken place for over 300 Learning Assistants across schools as well as whole school staff groups, probationer teachers and residential care staff.

Midlothian's Children and Young People's Mental Health Strategy aims to enable children and young people to build their resilience, grow their capabilities to self-manage and improve understanding of where to go for mental health information, help and support. Funds allocated from the Community Support & Services Framework to promote wellbeing and mental health have been distributed through local third sector partners with 188 children and young people benefitting from services

### 03. Challenges and Risks

#### **Q2 23/24:**

##### Attendance rates

The continuing impact of the pandemic on attendance and on post-school destinations  
The implementation of a new Attendance strategy as well as strengthened supports will help to reverse this negative trend.

##### ELC Delivery

Midlothian Council has a relatively high proportion of funded ELC places delivered by partners in the private and voluntary sectors. Any increases in the rate that is paid to funded providers would create additional upward pressure on the early years budget.

##### Rate of demographic growth on the learning estate

- A full refresh of school roll projections and capacities has been undertaken to assess current and future demand. This work will inform and shape the Learning Estate Strategy over the next 5 years.
- A number of schools funded through the Scottish Governments Learning Estate Investment Programme are at the briefing and design stages. There are council and developer funded projects being undertaken also.
- The Roll Projection data will be checked and refreshed on a 6 month basis to ensure we have provided sufficient capacity in each catchment. There are a number of schools with imminent capacity breaches.
- The Place Directorate are conducting Condition Surveys in all schools assets.
- 

##### Children with ASN

- Increase in the number of children and young people with additional support requiring more specialist provision will require robust monitoring to ensure staffing and specialist facilities meets level of needs
- Increase in the number of children and young people with additional support needs requiring more resourcing within mainstream school.

##### Recruitment and retention of staff

Increased difficulties of attracting and retaining subject specialists especially Maths, Science, Technologies is having an impact on service delivery in a number of secondary schools  
Attracting and retaining teaching and non-teaching staff into ASN provisions is having an impact on service delivery

##### Financial pressure

- There is a financial challenge to deliver statutory services given the current budget gap.
- Due to the current financial climate there may be an impact on services as a result of the cost of living and increase in poverty.

## Quarter 2 - Education-

**12**  
Indicators that are On Target

**5**  
Quarterly Education Service  
Indicators Off Target

**14**  
Education service Indicators  
Data only

**0**  
Indicators that have No Data  
Available

**19**  
Quarterly Education Service  
All Risks

**3**  
Quarterly Education Service  
High Risks

Education INDICATORS Off Target							
Code & Title	Gauge	Value	Target	Next Update Due	Last Update	History	
ED.MPI.07 % of internal/external audit actions progressing on target or complete this...		28.57%	90%	01 Jan 2024	Q2 2023/24		
ED.SPSO.05.1 Percentage of complaints at stage 1 complete within 5 working days		66.67%	95%	01 Jan 2024	Q2 2023/24		
BS.E.P.1.1e Improve Secondary School Attendance		89.15%	91.5%	01 Jan 2024	Q2 2023/24		
ED.SPSO.04.1 Average time in working days to respond to complaints at stage 1		5.222	5	01 Jan 2024	Q2 2023/24		
BS.E.P.1.1d Improve Primary School attendance		94.48%	95%	01 Jan 2024	Q2 2023/24		

← 1 of 1 →

## Education PI summary

### 01. Manage budget effectively

Priorities	Indicator	2022/23	Q2 2022/23	Q1 2023/24	Q2 2023/24				Annual Target 2023/24	Feeder Data	Value
		Value	Value	Value	Value	Status	Note	Short Trend			
01. Manage budget effectively	Performance against revenue budget	N/A	£119.244m	£130.446m	£130.763m		Q2 23/24: £4,000 underspend				

### 02. Manage stress and absence

Priorities	Indicator	2022/23	Q2 2022/23	Q1 2023/24	Q2 2023/24				Annual Target 2023/24	Feeder Data	Value
		Value	Value	Value	Value	Status	Note	Short Trend			
02. Manage stress and absence	Average number of working days lost due to sickness absence (cumulative)	7.97	3.1	2.07	3.14		Q2 23/24: On Target		7.5	Number of days lost	6,887.73
										Number of FTE in service	2,190.21

### 03. Process invoices efficiently



Priorities	Indicator	2022/23	Q2 2022/23	Q1 2023/24	Q2 2023/24				Annual Target 2023/24	Feeder Data	Value
		Value	Value	Value	Value	Status	Note	Short Trend			
03. Process invoices efficiently	% of invoices paid within 30 days of invoice receipt (cumulative)		95%	98%	97%		Q2 23/24: On Target			Number of invoices received (cumulative)	6,282
										Number of invoices paid within 30 days (cumulative)	6,102

### 04. Improve PI performance



Priorities	Indicator	2022/23	Q2 2022/23	Q1 2023/24	Q2 2023/24				Annual Target 2023/24	Feeder Data	Value
		Value	Value	Value	Value	Status	Note	Short Trend			
04. Improve PI performance	% of Service PIs that are on target/ have reached their target. (does not include Corporate PIs)	100%	94.74%	25%	100%		Q2 23/24: 6 PIs are reported annually in line with the LGBF reporting schedules.		90%	Number on tgt/complete or Data Only	6
										Total number of PIs	6



## 05. Control Risk

Priorities	Indicator	2022/23	Q2 2022/23	Q1 2023/24	Q2 2023/24				Annual Target 2023/24	Feeder Data	Value
		Value	Value	Value	Value	Status	Note	Short Trend			
05. Control Risk	% of high risks that have been reviewed in the last quarter	100%	100%	100%	100%		<b>Q2 23/24:</b>		100%	Number of high risks reviewed in the last quarter	2
											Number of high risks

## 06. Implement Improvement Plans

Priorities	Indicator	2022/23	Q2 2022/23	Q1 2023/24	Q2 2023/24				Annual Target 2023/24	Feeder Data	Value
		Value	Value	Value	Value	Status	Note	Short Trend			
06. Implement Improvement Plans	% of internal/external audit actions progressing on target or complete this quarter.	100%	100%	100%	28.57%		<b>Q2 23/24:</b> Off Target. Proposed new due date of 31.03.24 for several internal audit actions which are off target to enable completion			Number of internal/external audit actions on target or complete	4
											Number of internal/external audit actions

# Education Complaints Indicator Summary

## 4. Outcomes and Customer Feedback - Commitment to valuing Complaints


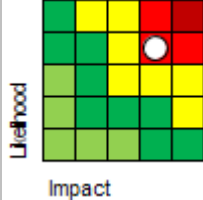
Indicator	2022/23	Q2 2022/23	Q1 2023/24	Q2 2023/24			
	Value	Value	Value	Value	Status	Note	Short Trend
Number of complaints received (quarterly)	71	14	23	19		<b>Q2 23/24:</b> Number of complaints are down this quarter from last. Is always a difficulty in anticipating and predicting the number of this type of data.	
Number of complaints closed in the year	55	7	13	13		<b>Q2 23/24:</b> Same number of complaints closed in this quarter, which is slightly higher than this time last year	
Number of complaints upheld (quarterly)	7	0	0	1		<b>Q2 23/24:</b> Data Only	
Number of complaints partially upheld (quarterly)	5	2	4	1		<b>Q2 23/24:</b> Data Only	
Number of complaints not upheld (quarterly)	12	3	3	5		<b>Q2 23/24:</b> Data Only	
Number of complaints Resolved (quarterly)	30	2	6	6		<b>Q2 23/24:</b> Data Only	
Average time in working days to respond to complaints at stage 1	5.92	6.17	4.33	5.22		<b>Q2 23/24:</b> Slightly higher time to respond to complaints at stage 1 compared to Q1, but this is still an improvement on last year's rate.	
Average time in working days to respond to complaints at stage 2	17.33	0	28	0		<b>Q2 23/24: On Target – there was no Stage 2 complaints during this period</b>	
Average time in working days for a full response for escalated complaints	10	10	18.17	11.75		<b>Q2 23/24:</b> On Target	
Percentage of complaints at stage 1 complete within 5 working days	70.83%	66.67%	83.33%	66.67%		<b>Q2 23/24:</b> The drop in this is in-line with previous Q2 figures and accounts for resourcing issues at the start of the new school term.	
Percentage of complaints at stage 2 complete within 20 working days	66.67%	100%	100%	100%		<b>Q2 23/24: On Target – there was no Stage 2 complaints during this period</b>	
Percentage of complaints escalated and complete within 20 working days	100%	100%	83.33%	100%		<b>Q2 23/24:</b> On Target	
Number of complaints where an extension to the 5 or 20 day target has been authorised (quarterly)	1	0	0	3		<b>Q2 23/24:</b> Data Only	
Number of Compliments	2	0	0	0		<b>Q2 23/24:</b> Data only	


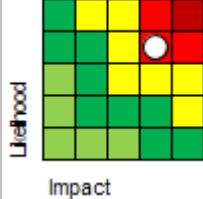

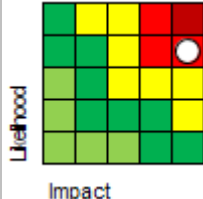
# Education PI Report



PI Code	PI	2022/23	Benchmark
		Value	
CHN13a	Percentage of P1, P4 and P7 pupils combined achieving expected CFE Level in Literacy (LGBF)	Data will be available Spring 2024	21/22 Rank 21 (Third Quartile) 20/21 Rank 17 (Third Quartile) 18/19 Rank 13 (Second Quartile)
CHN13b	Percentage of P1, P4 and P7 pupils combined achieving expected CFE Level in Numeracy (LGBF)		22/22 Rank 20 (Third Quartile) 20/21 Rank 18 (Third Quartile) 18/19 Rank 18 (Third Quartile)
CHN14a	Literacy Attainment Gap (P1,4,7 Combined) - percentage point gap between the least deprived and most deprived pupils (LGBF)		21/22 Rank 20 (Third Quartile) 20/21 Rank 26 (Bottom Quartile) 18/19 Rank 26 (Bottom Quartile)
CHN14b	Numeracy Attainment Gap (P1,4,7 Combined) - percentage point gap between the least deprived and most deprived pupils (LGBF)		21/22 Rank 22 (Third Quartile) 20/21 Rank 22 (Third Quartile) 18/19 Rank 25 (Bottom Quartile)
CHN4	% achieving 5 or more awards at SCQF Level 5 (LGBF)		21/22 Rank 25 (Third Quartile) 20/21 Rank 29 (Bottom Quartile) 19/20 Rank 27 (Bottom Quartile) 18/19 Rank 27 (Bottom Quartile) 17/18 Rank 26 (Bottom Quartile) 16/17 Rank 29 (Bottom Quartile)
CHN5	% achieving 5 or more awards at SCQF level 6 (LGBF)		21/22 Rank 15 (Second Quartile) 20/21 Rank 27 (Bottom Quartile) 19/20 Rank 22 (Third Quartile) 18/19 Rank 29 (Bottom Quartile) 17/18 Rank 23 (Third Quartile). 16/17 Rank 29 (Bottom Quartile).

# Education Service Risks

Code & Title	Risk Control Measure	Risk Identification	Risk Evaluation	Related Action	Related action latest note	Current Risk Matrix	Risk Score	Service
ED.RR.01-03 School Capacities/Catchment Areas/Demand for Pupil Places	<p>The main internal controls centre on service planning within the Education Service Plans e.g. (1) Midlothian Local Development Plan, (2) Review of school catchment areas and (3) Annual review of maximum pupil intake for primary and secondary schools. (4) School Estate Management Plan.</p> <p>In addition: Extensive planning, further consultation. An options appraisal is developed for each school and ways f/wd agreed. Ongoing review of nursery provision undertaken with proposals to address any shortfall in provision. Additional Partner providers brought on to supplement provision made by Midlothian Council.</p>	<p><b>Risk cause:</b> Increased population through local development, Midlothian fastest growing Council area in Scotland.</p> <p><b>Risk Event:</b> Increase in pupil numbers in specific localities.</p> <p><b>Risk Effect:</b> School capacities are insufficient to accommodate pupils in their catchment area without incurring additional investment in additional space.</p>		Progress school catchment review programme	<b>Q1 17/18:</b> Completed. The backlog of school catchment reviews has been addressed and the programme is now focused on addressing the requirements for increased school capacity resulting from population growth.		16	Education

Code & Title	Risk Control Measure	Risk Identification	Risk Evaluation	Related Action	Related action latest note	Current Risk Matrix	Risk Score	Service
MC40-03 Failure to deliver savings	Ensure project plan in place and savings profile validated. Track project plan and agreed deliverables and include financial performance in highlight reports. Escalate anything that falls outside agreed management parameters, with proposed remedial actions. Ensure options have a robust financial assessment and there is clarity on how service delivery is achieved within a reduced budget. At the end of each stage, ensure that the objectives/financial savings are on target. At the end of the project, review the achievement of objectives and report to the Project Board. Track financial savings following completion of the project and conduct a review of benefits.	Project fails to deliver its objectives and target financial savings.					16	Education
SRP.RR.20 Early Years Expansion (1140 Hours)	1. Learning Estate Strategy 2. Early Years Expansion to 1140 hours updates 3. Capital Strategy 4. School Roll Projections will be reviewed and updated 5. Business Support and Finance Business Partners	<b>Risk cause</b> Population growth in Midlothian over the next 10 - 15 years will see Midlothian become the fastest growing Council in Scotland. . 0-15 population increase, projected at 20% in addition the Scottish Government has		1140 future years funding	<b>Q1 23/24:</b> Draft guidance from SG. Enhanced guidance due re sustainable rate but no additional funding for LAs.		20	Education; Education Resources

Code & Title	Risk Control Measure	Risk Identification	Risk Evaluation	Related Action	Related action latest note	Current Risk Matrix	Risk Score	Service
	reviewing external funding landscape closely for future funding options	<p>made a commitment to increase the current provision of free early years care from 600 to 1140 hours.</p> <p><b>Risk event</b> Failure to resource and plan for these rises will significantly impact the Councils ability to fulfil its statutory obligations in relation to these groups.</p> <p>The sustainable rate review may lead to significant increase in funding to providers; maintaining current rate is not an option if not deemed sustainable. The result could lead to a funding gap in future years.</p> <p><b>Risk effect</b> Inadequate capacity within the school estate and/or Early Years to cope with the projected increase in numbers. Lack of staffing and/or financial support to build new schools Potential for additional unfunded request to place 4 year olds with August to December birthdays requesting additional year of 1140 hours, not currently funded by Scottish Government.</p>						

## Published Local Government Benchmarking Framework - Education



### Children's Services

Code	Title	2016/17	2017/18	2018/19	2019/20	2020/21	2021/22	External Comparison
		Value	Value	Value	Value	Value	Value	
CHN1	Corporate Indicator - Primary Education - Cost per pupil (LGBF)	£5,770.00	£5,972.00	£6,236.00	£6,117.00	£6,378.00	£6,720.00	21/22 Rank 16 (Second Quartile) 20/21 Rank 14 (Second Quartile) 19/20 Rank 13 (Second Quartile) 18/19 Rank 23 (Third Quartile) 17/18 Rank 18 (Third Quartile). 16/17 Rank 15 (Second Quartile).
CHN2	Corporate Indicator - Secondary Education - Cost per pupil (LGBF)	£7,927.00	£8,096.00	£7,937.00	£7,867.00	£8,445.00	£8,217.00	21/22 Rank 12 (Second Quartile) 20/21 Rank 20 (Third Quartile) 19/20 Rank 7 (Top Quartile) 18/19 Rank 11 (Second Quartile) 17/18 Rank 18 (Third Quartile). 16/17 Rank 14 (Second Quartile).
CHN3	Corporate Indicator - Pre- Primary Education - Cost per pupil (LGBF)	£5,190.00	£5,010.00	£5,450.00	£7,993.00	£10,885.00	£10,550.00	21/22 Rank 12 (Second Quartile) 20/21 Rank 21 (Third Quartile) 19/20 Rank 22 (Third Quartile) 18/19 Rank 16 (Second Quartile) 17/18 Rank 15 (Second Quartile). 16/17 Rank 18 (Third Quartile)
CHN4	% achieving 5 or more awards at SCQF Level 5 (LGBF)	54%	57%	57%	58%	60%	65%	21/22 Rank 25 (Third Quartile) 20/21 Rank 29 (Bottom Quartile) 19/20 Rank 27 (Bottom Quartile) 18/19 Rank 27 (Bottom Quartile) 17/18 Rank 26 (Bottom Quartile) 16/17 Rank 29 (Bottom Quartile)

Code	Title	2016/17	2017/18	2018/19	2019/20	2020/21	2021/22	External Comparison
		Value	Value	Value	Value	Value	Value	
CHN5	% achieving 5 or more awards at SCQF level 6 (LGBF)	26%	30%	28%	33%	33%	38%	21/22 Rank 15 (Second Quartile) 20/21 Rank 27 (Bottom Quartile) 19/20 Rank 22 (Third Quartile) 18/19 Rank 29 (Bottom Quartile) 17/18 Rank 23 (Third Quartile). 16/17 Rank 29 (Bottom Quartile).
CHN6	% SIMD Quintile 1 achieving 5 or more awards at SCQF level 5 (LGBF)	43%	47%	44%	39%	41%	49%	20/21 Rank 18 (Third Quartile) 19/20 Rank 21 (Third Quartile) 18/19 Rank 15 (Second Quartile) 17/18 Rank 6 (Top Quartile). 16/17 Rank 10 (Second Quartile).
CHN7	% SIMD Quintile 1 achieving 5 or more awards at SCQF level 6 (LGBF)	9%	17%	11%	16%	17%	14%	21/22 Rank 27 (Bottom Quartile) 20/21 Rank 21 (Third Quartile) 19/20 Rank 18 (Third Quartile) 18/19 Rank 24 (Third Quartile) 17/18 Rank 12 (Second Quartile) 16/17 Rank 27 (Bottom Quartile)
CHN10	Corporate Indicator - Percentage of Adults satisfied with local schools (LGBF)	78.33%	78.67%	74.63%	69.3%	64.63%	67%	19/20 Rank 25 (Bottom Quartile) 18/19 Rank 18 (Third Quartile) 17/18 Rank 10 (Second Quartile). 16/17 Rank 19 (Third Quartile). 15/16 Rank 23 (Third Quartile). 14/15 Rank 23 (Third Quartile).
CHN11	Proportion of Pupils Entering Positive Destinations (LGBF)	94.78%	94.91%	93.81%	94.47%	95.44%	95%	21/22 Rank 19 (Third Quartile) 20/21 Rank 18 (Third Quartile) 19/20 Rank 10 (Second Quartile) 18/19 Rank 29 (Bottom Quartile) 17/18 Rank 16 (Second Quartile) 16/17 Rank 11 (Second Quartile)
CHN12a	Overall Average Total Tariff (LGBF)	799	836	806	818	880	929	21/22 Rank 19 (Third Quartile) 20/21 Rank 20 (Third Quartile) 19/20 Rank 24 (Third Quartile) 18/19 Rank 25 (Bottom Quartile) 17/18 Rank 24 (Third Quartile). 16/17 Rank 29 (Bottom Quartile).



Code	Title	2016/17	2017/18	2018/19	2019/20	2020/21	2021/22	External Comparison
		Value	Value	Value	Value	Value	Value	
CHN12b	Average Total Tariff SIMD Quintile 1 (LGBF)	577	652	559	557	588	555	21/22 Rank 26 (Third Quartile) 20/21 Rank 23 (Third Quartile) 19/20 Rank 19 (Third Quartile) 18/19 Rank 20 (Third Quartile) 17/18 Rank 12 (Second Quartile). 16/17 Rank 20 (Third Quartile).
CHN12c	Average Total Tariff SIMD Quintile 2 (LGBF)	719	701	666	678	677	724	21/22 Rank 22 (Third Quartile) 20/21 Rank 26 (Bottom Quartile) 19/20 Rank 24 (Third Quartile) 18/19 Rank 23 (Third Quartile) 17/18 Rank 22 (Third Quartile). 16/17 Rank 19 (Third Quartile).
CHN12d	Average Total Tariff SIMD Quintile 3 (LGBF)	792	845	784	849	1,004	1,008	21/22 Rank 12 (Second Quartile) 20/21 Rank 7 (Top Quartile) 19/20 Rank 22 (Third Quartile) 18/19 Rank 28 (Bottom Quartile) 17/18 Rank 23 (Third Quartile). 16/17 Rank 28 (Bottom Quartile).
CHN12e	Average Total Tariff SIMD Quintile 4 (LGBF)	919	976	1,067	948	988	1,152	21/22 Rank 10 (Second Quartile) 20/21 Rank 22 (Third Quartile) 19/20 Rank 23 (Third Quartile) 18/19 Rank 10 (Second Quartile). 17/18 Rank 21 (Third Quartile). 16/17 Rank 25 (Bottom Quartile).
CHN12f	Average Total Tariff SIMD Quintile 5 (LGBF)	1,026	1,165	1,110	1,144	1,325	1,218	21/22 Rank 17 (Third Quartile) 20/21 Rank 12 (Second Quartile) 19/20 Rank 20 (Third Quartile) 18/19 Rank 24 (Third Quartile). 17/18 Rank 19 (Third Quartile). 16/17 Rank 28 (Bottom Quartile).
CHN13a	Percentage of P1, P4 and P7 pupils combined achieving expected CFE Level in Literacy (LGBF)			73%		66%	68.2%	21/22 Rank 21 (Third Quartile) 20/21 Rank 17 (Third Quartile) 18/19 Rank 13 (Second Quartile)
CHN13b	Percentage of P1, P4 and P7 pupils combined achieving expected CFE Level in Numeracy (LGBF)			78%		73%	76.1%	22/22 Rank 20 (Third Quartile) 20/21 Rank 18 (Third Quartile) 18/19 Rank 18 (Third Quartile)

Code	Title	2016/17	2017/18	2018/19	2019/20	2020/21	2021/22	External Comparison
		Value	Value	Value	Value	Value	Value	
CHN14a	Literacy Attainment Gap (P1,4,7 Combined) - percentage point gap between the least deprived and most deprived pupils (LGBF)			27%		32%	25.5%	21/22 Rank 20 (Third Quartile) 20/21 Rank 26 (Bottom Quartile) 18/19 Rank 26 (Bottom Quartile)
CHN14b	Numeracy Attainment Gap (P1,4,7 Combined) - percentage point gap between the least deprived and most deprived pupils (LGBF)			23%		27%	20.9%	21/22 Rank 22 (Third Quartile) 20/21 Rank 22 (Third Quartile) 18/19 Rank 25 (Bottom Quartile)
CHN18	Percentage of funded early years provision which is graded good/better (LGBF)	90.7%	91.4%	87.9%	84.7%	88.5%	87.1%	21/22 Rank 22 (Third Quartile) 20/21 Rank 24 (Third Quartile) 19/20 Rank 27 (Bottom Quartile) 18/19 Rank 25 (Bottom Quartile) 17/18 Rank 19 (Third Quartile) 16/17 Rank 22 (Third Quartile).
CHN19a	School attendance rates (per 100 pupils) (LGBF)	92.6		92.6		92.3		20/21 Rank 16 (Second Quartile) 18/19 Rank 24 (Third Quartile) 16/17 Rank 26 (Bottom Quartile).
CHN19b	School attendance rates (per 100 'looked after children') (LGBF)	85.02		83.74		89.86		18/19 Rank 29 (Bottom Quartile). 16/17 Rank 28 (Bottom Quartile).
CHN20a	School exclusion rates (per 1,000 pupils) (LGBF)	44.35		30.65		9.51		20/21 Rank 8 (Top Quartile) 18/19 Rank 30 (Bottom Quartile) 16/17 Rank 31 (Bottom Quartile)
CHN20b	School exclusion rates (per 1,000 'looked after children') (LGBF)	135.14		264.31	N/A	N/A		16/17 Rank 26 (Bottom Quartile). 14/15 Rank 28 (Bottom Quartile).
CHN21	Participation rate for 16-19 year olds (per 100) (LGBF)	93.6%	94.3%	92.9%	93.4%	93.7%	93.36%	21/22 Rank 13 (Second Quartile) 20/21 Rank 8 (Top Quartile) 19/20 Rank 13 (Second Quartile) 18/19 Rank 10 (Second Quartile) 17/18 Rank 8 (Top Quartile) 16/17 Rank 7 (Top Quartile).