

NOTES

All dimensions in millimetres.

Gate to be to BS 3470.
except as otherwise stated below.

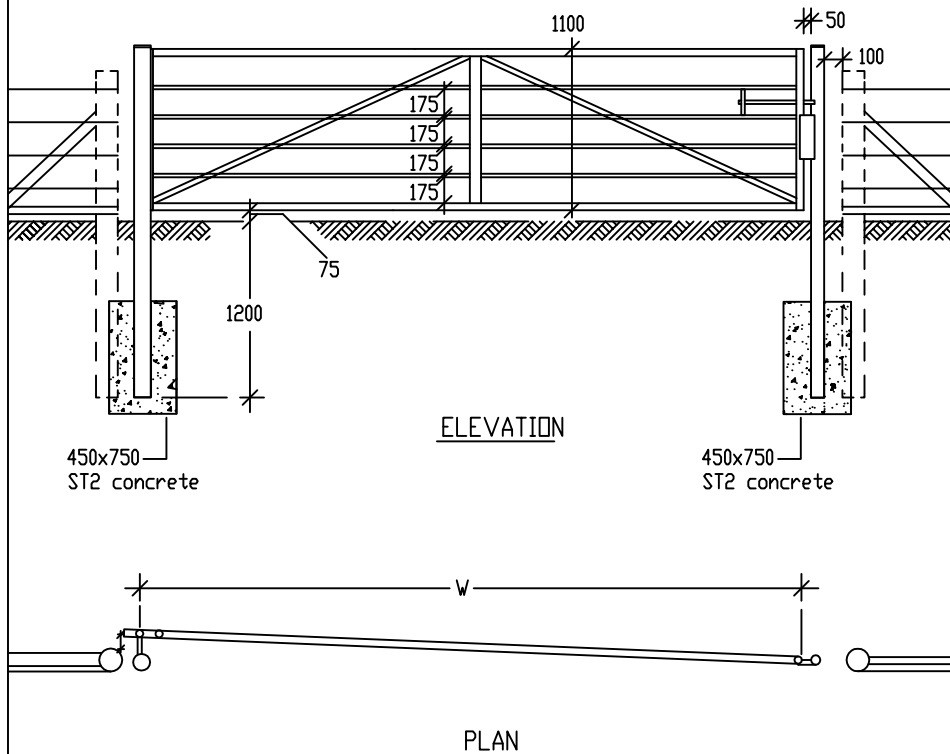
Gate width-dimension W on drawing
to be 2.4m, 3.0m, 3.6m, or 4.5m,
or as otherwise scheduled.

Hinge pins to be 70mm long
x 20mm dia.

Bolt fastening to be 19mm. dia,
or latch bar if flat 30mm x 9mm
alternatively hook and chain
550mm long galvanised complying
with BS EN ISO 1461:2009 Gate stop
plate to be 200mm deep x 100mm
wide x 6mm thick offset on shutting
post.

Gate and posts to be galvanised to
BS EN ISO 1461:2009.

Gate to open into field.



DESCRIPTION OF MATERIAL	SIZE	FIXINGS AND FITTINGS
Hanging post (Tubular steel)	114.3 outer dia x 3.6 thick	Top capping plate 4.8 thick Two 230x150x4.8 wing plates sitch welded to post Base plate 250x250x4.8 Cap and base plates to be continuously flush welded to tube
Shutting poste (Tubular steel)	88.9 outer dia x 3.2 thick	
Outer frames	48.3 outer dia x 2.9 thick	
Infilling horizontal rails (All tubular steel)	42.4 outer dia x 2.6 thick	
Vertical braces (steel flat)	Three 38x4.8	Fillet welded to each gate member crossed by braces
Diagonal braces (steel flat)co	Two 38x4.8	

MIDLOTHIAN COUNCIL
Roads Services

STEEL TUBULAR FRAME SINGLE FIELD GATE
1.100m HIGH WITH STEEL POSTS

DATE: Mar 2013

No. 3552