

NOTES

Manholes with an outlet pipe of 600mm dia. or greater shall be provided with a hand rail.

The access position may be altered with the Project Manager's approval, to suit the pipe layout within the manhole.

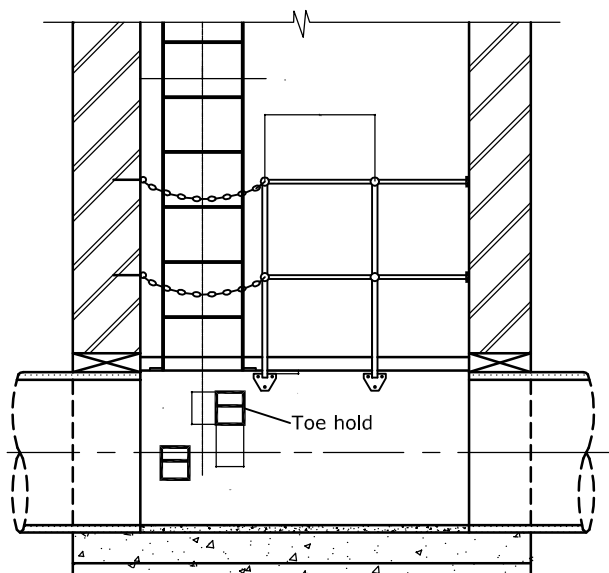
The maximum length of handrail section between standards or the manhole wall shall be 600mm.

Standards may be solid or tubular galvanized, of between 32-50mm outside diameter, with triangular palm base brackets, fixed with M16 bolts.

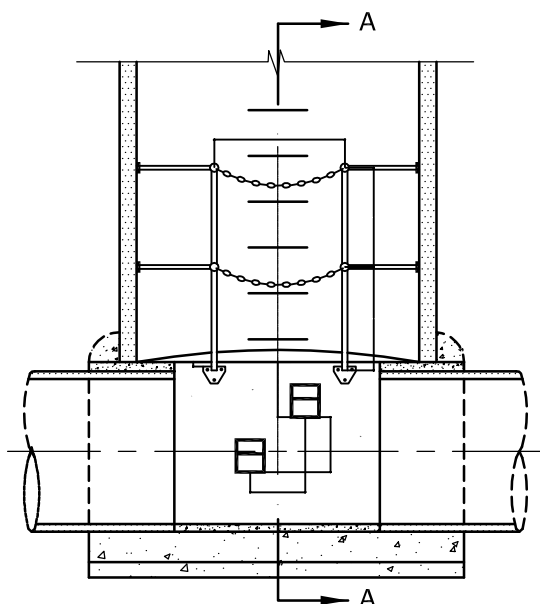
Handrail shall be solid galvanized, of 25mm diameter, fixed through the balls in the standards with grub screws, and to the manhole wall, with wall flange brackets.

Chains shall be 10mm galvanized mild steel short link to BS.6405:1984 with a hook and eye, such that one side is detachable.

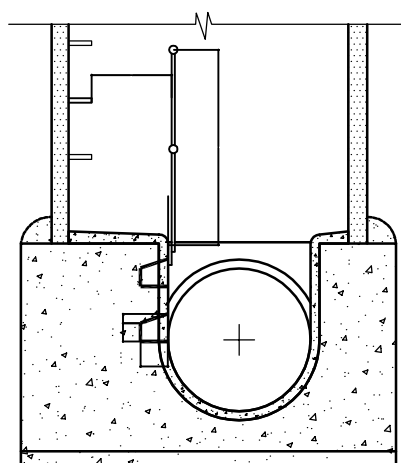
All components shall be hot dip galvanized to BS.EN.ISO.1461:2009.



SECTIONAL ELEVATION



SECTIONAL ELEVATION



SECTIONAL ELEVATION AA