

NOTES

This manhole is for use where
1. Depth to invert $\leq 3.6\text{m}$.

All dimensions in millimetres.

75mm depth mix ST1 blinding concrete to be provided under base.

Manhole base to be cast insitu in mix ST4 concrete. Channels shall be a preformed half circle or of 40mm thick granolithic concrete. Benching shall be of concrete with 25mm thick granolithic concrete sloping to the channel at 1 in 12. All finishes shall be smooth, to Class U3.

Pipes to be built into base such that the pipe end is not less than 20mm nor more than 50mm from the nearest point on the inside face of the chamber ring.

For all pipes except corrugated, the nearest joint shall form part of an articulated section and be not more than 500mm from the inner face of the chamber ring.

All precast concrete manhole components to be reinforced and comply with BS.5911-3:2002. The cover slab shall be "heavy duty".

All components to be bedded on designation (i) mortar, and surplus neatly struck off.

Joint faces between rings on foul manholes to be sealed with a trowelling grade bituminous material, or proprietary flexible jointing compound.

Top and bottom rings shall be plain ended. The bottom ring shall be haunched with mix ST4 concrete.

Step irons with a stand off length of 120mm to be to BS.EN.13101:2002.

The access position may be altered with the Project Manager's approval to suit the pipe layout within the manhole.

Manholes with an outlet pipe of 500mm dia. or greater shall have a handhold and stepped access to the invert. See Drg. 5308.

Manholes with an outlet pipe of 600mm dia. or greater shall have a handrail and safety chain. See Drgs 5306 & 5307.

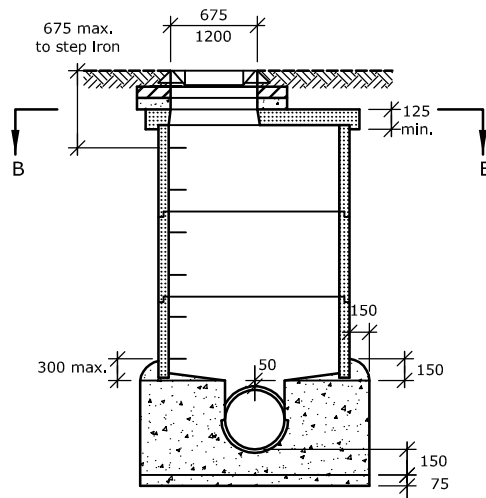
1 to 2 courses of HD type Class B clay engineering brick to BS.EN.771-1:2003 or concrete bricks to BS.EN.771-3 & 2:2003 to be provided to adjust final level of manhole cover. For details of seating slab see Drg 5309.

Manhole cover to be as billed. In the carriageway cover and frame to be to BS.EN.124:1994 Class D400. In other locations cover and frame to be to BS.EN.124:1994 Class B125.

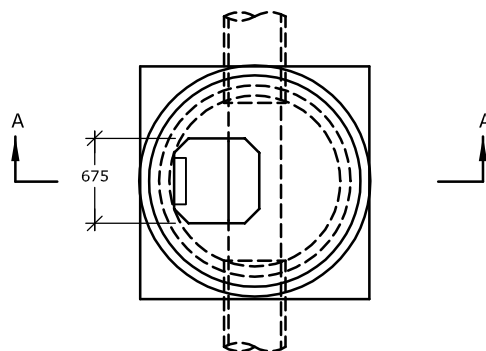
All mortar to be designation (i) except in the carriageway where the cover frame shall be bedded on epoxy resin mortar.

MH Type No.	Chamber dia. mm
1	1050
2	1200
3	1350
4	1500
5	1800

Depth to Invert	Access Size mm	Chamber Size (minimum) mm
$\leq 2\text{m}$	1200 x 675	1350 dia.
2m - 3.6m	675 x 675	1050 dia.



SECTIONAL ELEVATION AA



SECTIONAL PLAN BB