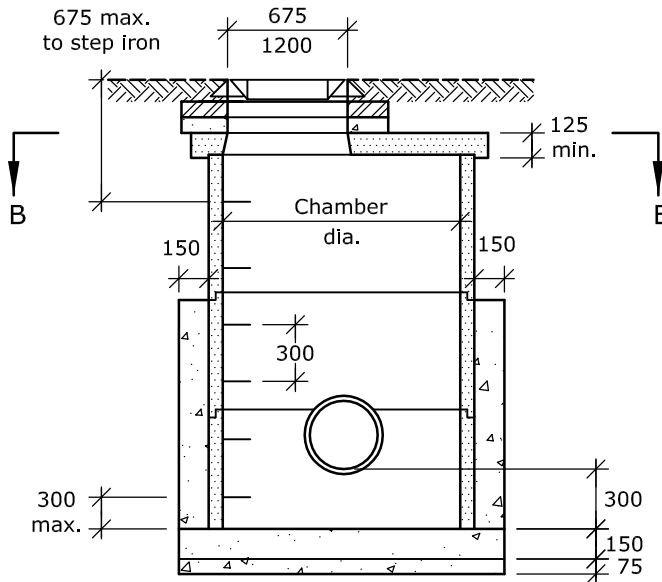
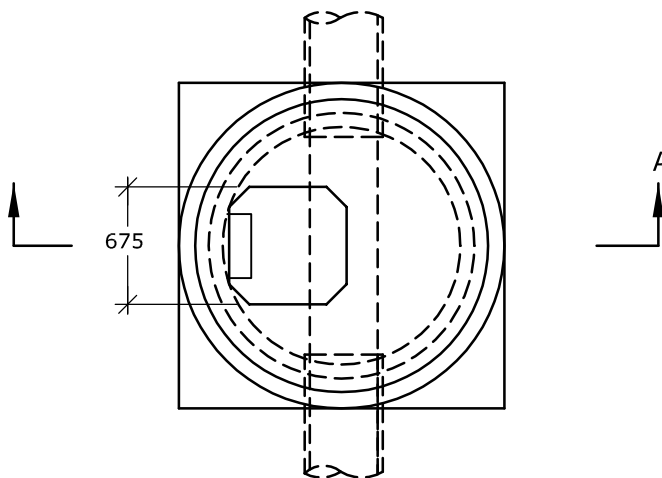


CP Type No.	Chamber dia. mm
1	1050
2	1200
3	1350

Depth to base	Access size mm	Chamber size (minimum) mm
≤2m	1200 x 675	1350 dia.
2m - 3.3m	675 x 675	1050 dia.



SECTIONAL ELEVATION AA



SECTIONAL PLAN BB

NOTES

This catchpit is for use where
1. Depth to base ≤3.3m.

All dimensions in millimetres.

75mm depth mix ST1 blinding concrete to be provided under base.

Catchpit base to be cast insitu, in mix ST4 concrete. Finish shall be smooth, to Class U3.

Pipes to be built into chamber rings such that the pipe end is not less than 20mm nor more than 50mm from the nearest point on the inside face of the chamber ring.

Openings in rings shall not be wider at any point perpendicular to the pipe direction, than the outside dia. of the pipe +20mm.

Rings which have 3 or more openings for pipes, or any opening for a pipe whose dia. exceeds 225mm, shall be completely surrounded for the full ring height with 150mm thick mix ST4 concrete after the installation of all pipes.

For all pipes except corrugated, the nearest joint shall form part of an articulated section and be not more than 500mm from the inner face of the wall.

All precast concrete catchpit components to be reinforced and comply with BS.5911-3:2002. The cover slab shall be "heavy duty".

All components to be bedded on designation (i) mortar, and surplus neatly struck off.

Top and bottom rings shall be plain ended. The bottom ring shall be haunched with mix ST4 concrete.

Step irons with a stand off length of 120mm to be to BS.EN.13101:2002.

The access position may be altered with the Project Manager's approval to suit the pipe layout within the catchpit.

1 to 2 courses of HD type Class B clay engineering brick to BS.EN.771-1:2003 or concrete bricks to BS.EN.771-3 & 2:2003 to be provided to adjust final level of catchpit cover. For details of seating slab see Drg. 5309.

Catchpit cover to be as billed. In the carriageway cover and frame to be to BS.EN.124:1994 Class D400. In other locations cover and frame to be to BS.EN.124:1994 Class B125.

All mortar to be designation (i) except in the carriageway where the cover frame shall be bedded on epoxy resin mortar.