

NOTES

All dimensions in millimetres

For details of Precast Concrete D Island see Drg No. 11304A.

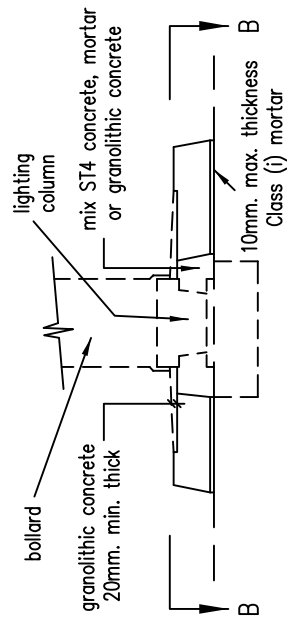
For details of bollard mounting see Drg. No. 5459

Granolithic concrete finishing to island to trowelled smooth, and sloping to the edges at a slope of 1 in 40.

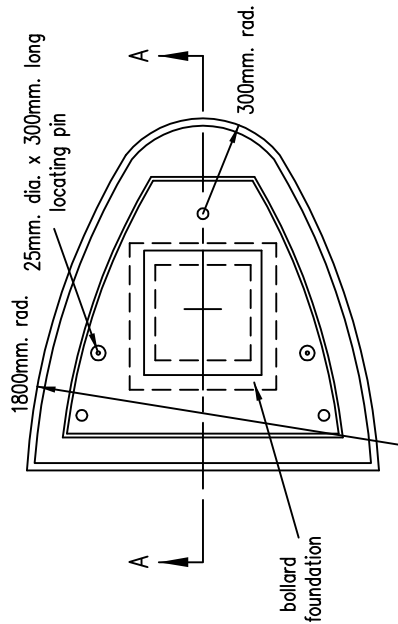
Island unit to be bedded on 10mm. max. thickness of designation (i) mortar.

Locating pins to be 25mm. dia. x 300mm. long, driven into existing road construction.

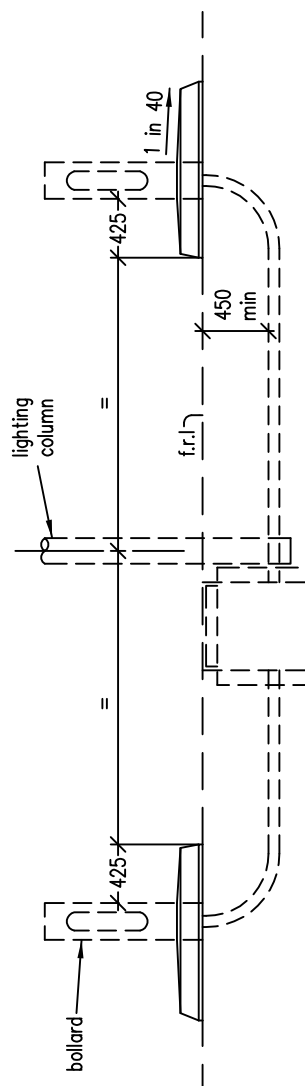
Locating pin holes to be filled with designation (i) mortar.



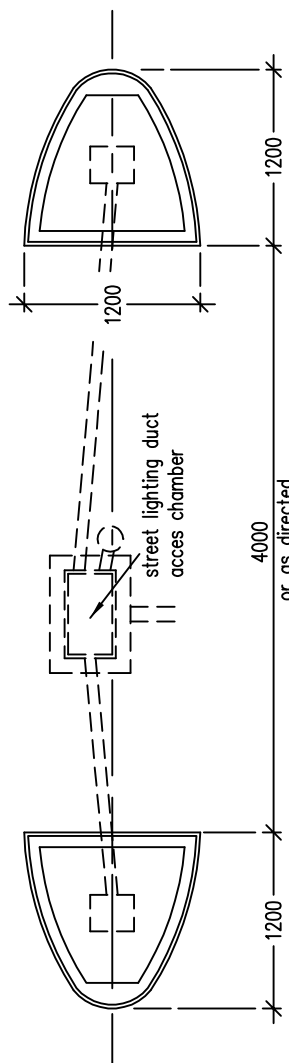
SECTIONAL ELEVATION A-A



SECTIONAL PLAN B-B



ELEVATION



PLAN